



NOS
FRÜHJAHR | SOMMER
2022

NOS SPRING | SUMMER 2022

1/1: 01.01.-30.06.2022

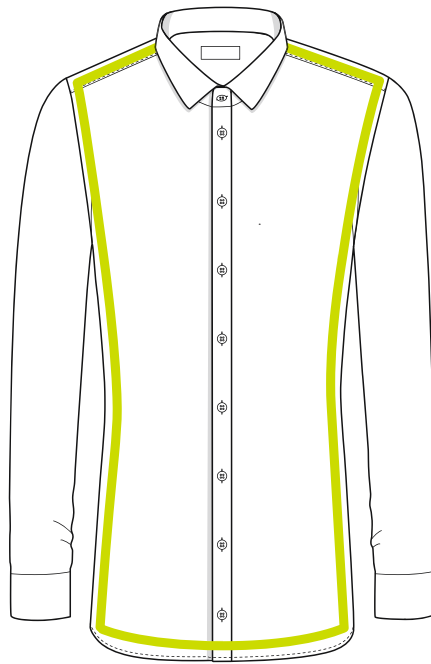
1/2: 01.03.-31.07.2022

ET ER N A

SUPER SLIM

EXTRA SCHMALE
SCHNITTFÜHRUNG.
FIGURE-HUGGING.

1/1

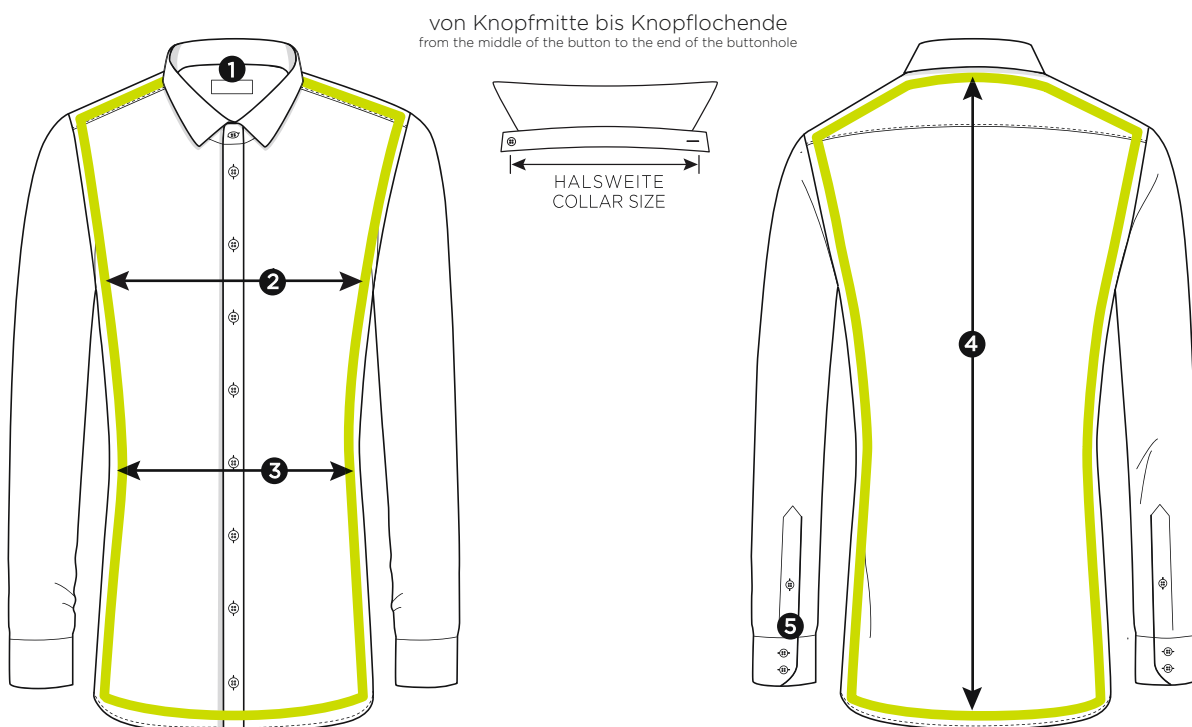


Standard-Maßtabelle

standard measurement chart

**SUPER
SLIM**

1	Halsweiten collar sizes	cm inch	36 14	37/38 14½/15	39/40 15½/15¾	41/42 16/16½	43/44 17/17½	45/46 17¾/18	47/48 18½/19	49/50 19¼/19½	52 20½	54 21¼
2	Oberweite chest measurement	COMFORT FIT		112	120	128	134	148	154	160	168	176
		MODERN FIT		110	116	122	132	138	146			
		SLIM FIT		102	110	116	124	134				
		SUPER SLIM	98	102	110	116	124					
3	Tailleweite waist measurement	COMFORT FIT		108	114	124	134	148	154	160	168	176
		MODERN FIT		102	106	114	122	130	138			
		SLIM FIT		92	98	104	112	122				
		SUPER SLIM	79	83	89	95	103					
4	Rumpflänge bei Äl 67 body length for SL 67	SLIM FIT		80	80	80	82	85				
		SUPER SLIM	80	80	80	80	82					
		COMFORT FIT		26	26	26	28	28	28	30	30	30
		MODERN FIT		26	26	26	28	28	28			
5	Bündchenlänge cuff length	COMFORT FIT		26	26	26	28	28	28			
		MODERN FIT		26	26	26	28	28	28			
		SLIM FIT		26	26	26	28	28				
		SUPER SLIM	26	26	26	26	28					

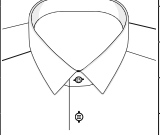


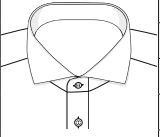
NOS-Modelle

NOS styles

SUPER
SLIM

Kragen- form collar	Arm- länge sleeves	Modell style	Leiste placket			Tasche pocket		Saum hemline		PATCHUNG Innensteg Kragen mix&match inside collar stand	PATCHUNG Manschette mix&match inside cuff	geteilter Kragensteg half patch	PATCHUNG Passe mix&match yoke	PATCHUNG Untertritt mix&match inside placket	UMA double cuff
			eingeschlagen	Biese	verdeckt	mit	ohne	gerade	rund						
			with fold	button facing	fly front	with	without	straight	round						

MINIKENT	1/1	Z181	✓				✓		✓						
	1/1	Z141	✓				✓		✓	✓	✓				

HAI SHARK	1/1	Z182	✓				✓		✓						
															



8424 UNI STRETCH



97% BAUMWOLLE | COTTON
 3% ELASTODIEN (XLA) | ELASTODIENE
 Z181 MINI KENT
 OHNE TASCHE | WITHOUT POCKET
 36-44



8817 COVER SHIRT TWILL



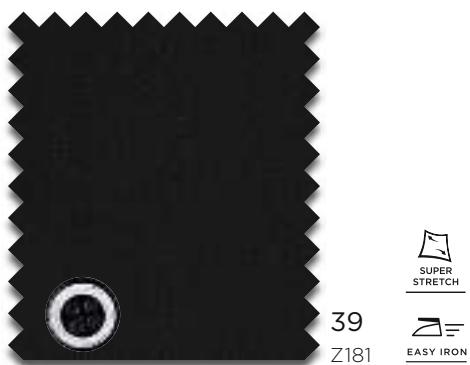
100% BAUMWOLLE | COTTON
 Z182 HAI | SHARK
 OHNE TASCHE | WITHOUT POCKET
 36-44



3377 PERFORMANCE SHIRT



70% LYOCELL | LOYCELL
 26% POLYAMID | POLYAMIDE
 4% ELASTHAN | ELASTANE
 Z181 MINI KENT
 OHNE TASCHE | WITHOUT POCKET
 36-44



3377 PERFORMANCE SHIRT



70% LYOCELL | LOYCELL
 26% POLYAMID | POLYAMIDE
 4% ELASTHAN | ELASTANE
 Z141 MINI KENT
 OHNE TASCHE | WITHOUT POCKET
 36-44

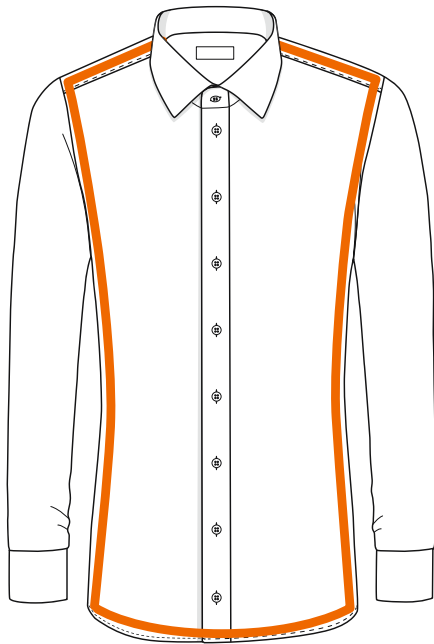


*SEASONAL: solange Vorrat reicht | as long as stock lasts

SLIM FIT

SCHMALE
SCHNITTFÜHRUNG.
NARROW FIT.

1/1



1/2

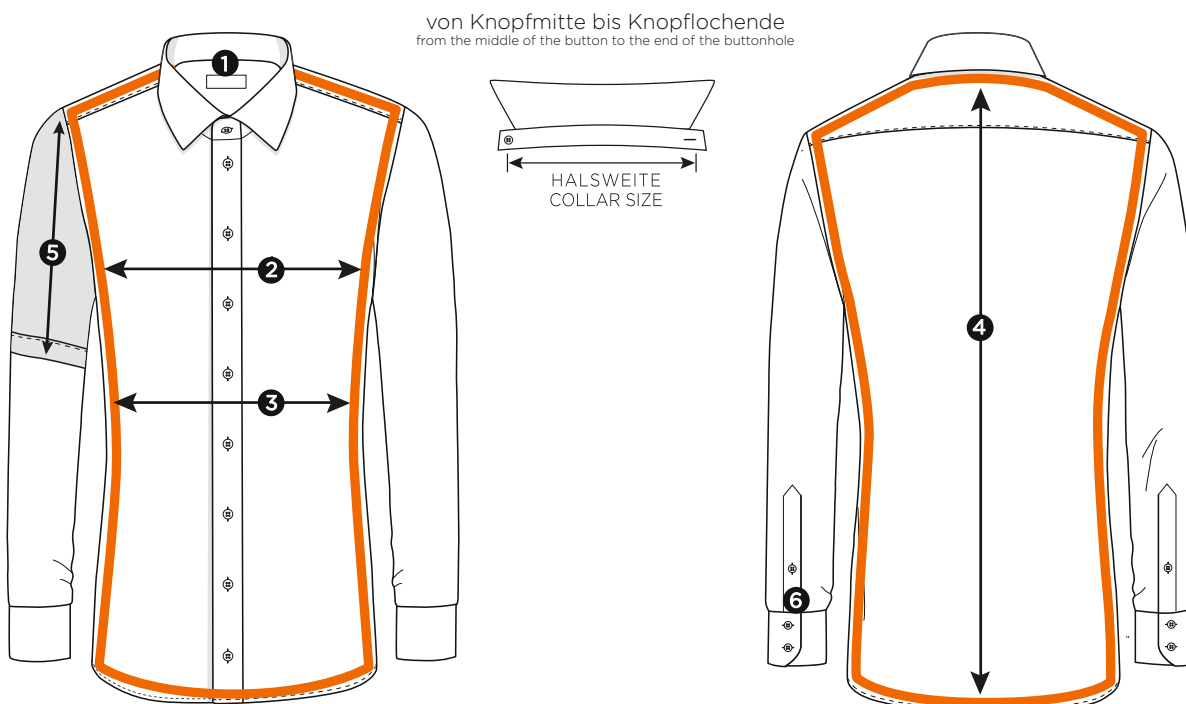


Standard-Maßtabelle

standard measurement chart

SLIM
FIT

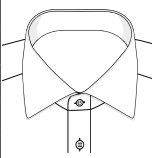
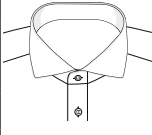
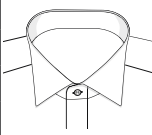
1	Halsweiten collar sizes	cm inch	36 14	37/38 14½/15	39/40 15½/15¾	41/42 16/16½	43/44 17/17½	45/46 17¾/18	47/48 18½/19	49/50 19¼/19½	52 20½	54 21¼
2	Oberweite chest measurement	COMFORT FIT		112	120	128	134	148	154	160	168	176
		MODERN FIT		110	116	122	132	138	146			
		SLIM FIT		102	110	116	124	134				
	SUPER SLIM	98	102	110	116	122						
3	Tailleweite waist measurement	COMFORT FIT		108	114	124	134	148	154	160	168	176
		MODERN FIT		102	106	114	122	130	138			
		SLIM FIT		92	98	104	112	122				
	SUPER SLIM	79	83	89	95	103						
4	Rumpflänge bei Äl 67 body length for SL 67	SLIM FIT		80	80	80	82	85				
	SUPER SLIM	80	80	80	80	82						
	Rumpflänge bei Äl 72 body length for SL 72	COMFORT FIT		90	90	90	90	90	90	95	95	95
		MODERN FIT		90	90	90	90	90	90			
		SLIM FIT		90	90	90	90	90				
5	Ärmellänge 1/2 short sleeve	COMFORT FIT		28	28	28	28	30	30	30	30	30
		MODERN FIT		27	27	27	28	30	30			
		SLIM FIT		24	24	24	24	26				
6	Bündchenlänge cuff length	COMFORT FIT		26	26	26	28	28	28	30	30	30
		MODERN FIT		26	26	26	28	28	28			
		SLIM FIT		26	26	26	28	28				
	SUPER SLIM	26	26	26	26	28						



NOS-Modelle

NOS styles

SLIM
FIT

Kragen- form collar	Arm- länge sleeves	Modell style	Leiste placket			Tasche pocket		Saum hemline		PATCHUNG Innensteg Kragen mix&match inside collar stand	PATCHUNG Manschette mix&match inside cuff	geteilter Kragensteg half patch	PATCHUNG Passe mix&match yoke	PATCHUNG Untertritt mix&match inside placket	UMA double cuff
			eingeschlagen	Biese	verdeckt	mit	ohne	gerade	rund						
			with fold	button facing	fly front	with	without	straight	round						
CLASSIC KENT	1/1	F140	✓				✓		✓	✓					
	1/1	F170	✓				✓		✓						
HAI SHARK	1/1	F132	✓				✓		✓	✓				✓	
	1/1	F142	✓				✓		✓	✓					
	1/1	F182	✓				✓		✓						
	1/1	F392			✓		✓		✓						✓
	1/1	F482	✓				✓		✓						✓
	1/1	F94V	✓				✓		✓	✓	✓				
	1/2	G182	✓				✓		✓						
KLÄPPCHEN WING	1/1	F362			✓		✓		✓						✓
															

8817 COVER SHIRT TWILL

B

100% BAUMWOLLE | COTTON
 F182 HAI | SHARK
 OHNE TASCHE | WITHOUT POCKET

BLICKDICHT OPAQUE

00	XXL	NON IRON
F182	38-46	

21		NON IRON
F182	38-44	

10	XXL	NON IRON
F182	38-46	



8819 COVER SHIRT TWILL

C

100% BAUMWOLLE | COTTON
 F142 HAI | SHARK
 OHNE TASCHE | WITHOUT POCKET
 38-44

BLICKDICHT OPAQUE

00	NON IRON
F142	

10	NON IRON
F142	

8819 COVER SHIRT TWILL

B

100% BAUMWOLLE | COTTON
 F182 HAI | SHARK
 OHNE TASCHE | WITHOUT POCKET
 38-44

BLICKDICHT OPAQUE

00	NON IRON
F182	

1100 UNI POPELINE



100% BAUMWOLLE | COTTON
 F182 HAI | SHARK
 OHNE TASCHE | WITHOUT POCKET



00
 F182 37-46

10
 F182 37-44

39
 F182 37-44

8424 UNI STRETCH



97% BAUMWOLLE | COTTON
 3% ELASTODIEN (XLA) | ELASTODIENE (XLA)
 F182 HAI | SHARK
 OHNE TASCHE | WITHOUT POCKET
 37-46



00
 F182

10
 F182

8100 FEIN OXFORD



100% BAUMWOLLE | COTTON
 F132 HAI | SHARK
 OHNE TASCHE | WITHOUT POCKET



00
 F132 37-46

12
 F132 38-46

8888 CHAMBRAY STRETCH



97% BAUMWOLLE | COTTON
 3% ELASTODIEN (XLA) | ELASTODIENE (XLA)
 F140 CLASSIC KENT
 OHNE TASCHE | WITHOUT POCKET
 38-44



32
 F140

PERFORMANCE SHIRT



3377 PERFORMANCE SHIRT

B

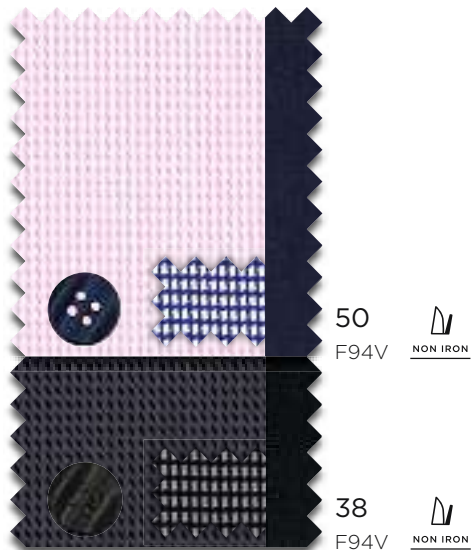
70% LYOCELL | LYOCELL
 26% POLYAMID | POLYAMIDE
 4% ELASTHAN | ELASTANE
 F170 CLASSIC KENT
 OHNE TASCHE | WITHOUT POCKET
 38-44

	00 F170	 SUPER STRETCH
		 EASY IRON
	12 F170	 SUPER STRETCH
		 EASY IRON
	19 F170	 SUPER STRETCH
		 EASY IRON
	07 F170	 SUPER STRETCH
		 EASY IRON
	35 F170	 SUPER STRETCH
		 EASY IRON
	39 F170	 SUPER STRETCH
		 EASY IRON

3116 STRUKTUR TWILL



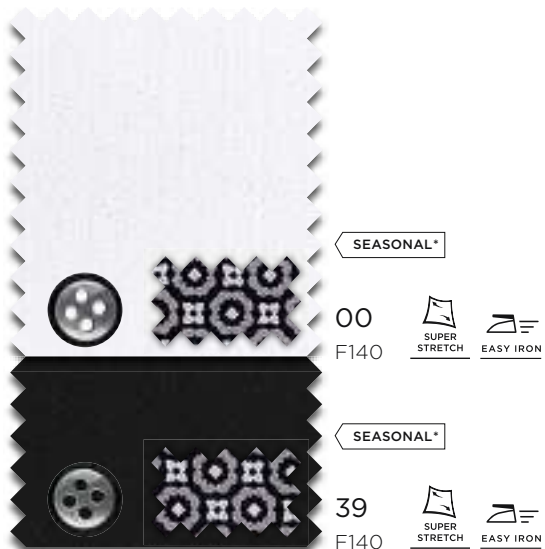
100% BAUMWOLLE | COTTON
F94V HAI | SHARK
OHNE TASCHE | WITHOUT POCKET
38-44



3377 PERFORMANCE SHIRT



70% LYOCELL | LYOCELL
26% POLYAMID | POLYAMIDE
4% ELASTHAN | ELASTANE
F140 CLASSIC KENT
OHNE TASCHE | WITHOUT POCKET
38-44




*SEASONAL: solange Vorrat reicht | as long as stock lasts

8992 STREIFEN TWILL**B**

100% BAUMWOLLE | COTTON
 F140 CLASSIC KENT
 OHNE TASCHE | WITHOUT POCKET
 38-44



16
 F140 

8038 STRUKTUR PANAMA**B**

100% BAUMWOLLE | COTTON
 F170 CLASSIC KENT
 OHNE TASCHE | WITHOUT POCKET
 38-44



SEASONAL*
 12
 F170 

8603 STRUKTUR STRETCH**B**

98% BAUMWOLLE | COTTON
 2% ELASTODIEN (XLA) | ELASTODIENE (XLA)
 F142 HAI | SHARK
 OHNE TASCHE | WITHOUT POCKET
 38-46

XXL

12
 F142 


8079 PRINT TWILL**B**

100% BAUMWOLLE | COTTON
 F170 CLASSIC KENT
 OHNE TASCHE | WITHOUT POCKET
 38-44




SEASONAL*
 16
 F170 

4671 STRUKTUR**B**

100% BAUMWOLLE | COTTON
 F142 HAI | SHARK
 OHNE TASCHE | WITHOUT POCKET
 38-44



11
 F142 

4029 PRINT TWILL**C**

100% BAUMWOLLE | COTTON
 F182 HAI | SHARK
 OHNE TASCHE | WITHOUT POCKET
 38-44



SEASONAL*
 24
 F182 

3377 PERFORMANCE SHIRT **B**

70% LYOCELL | LYOCELL
26% POLYAMID | POLYAMIDE
4% ELASTHAN | ELASTANE
G182 HAI | SHARK
OHNE TASCHE | WITHOUT POCKET
38-44

1/2



SEASONAL*

00
G182



SEASONAL*

12
G182



HEMD ODER SPORTS- WEAR?

SUPER STRETCH

PERFORMANCE SHIRT

*SEASONAL: solange Vorrat reicht | as long as stock lasts

MODERN FIT

MODERNE
SCHNITTFÜHRUNG.
MODERN FIT.

1/1



1/2

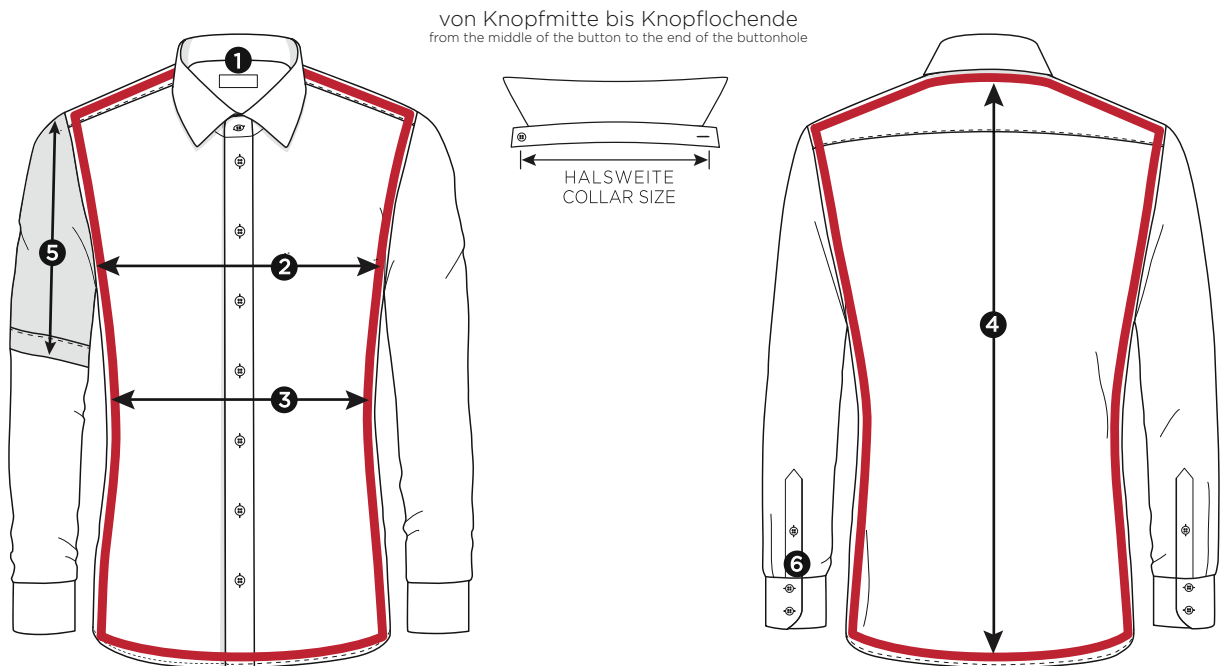


Standard-Maßtabelle

standard measurement chart

MODERN
FIT

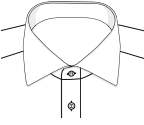
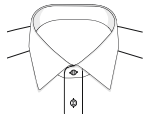
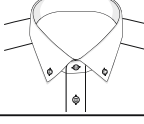
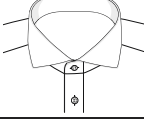
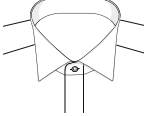
1	Halsweiten collar sizes	cm inch	36 14	37/38 14½/15	39/40 15½/15¾	41/42 16/16½	43/44 17/17½	45/46 17¾/18	47/48 18½/19	49/50 19¼/19½	52 20½	54 21¼	
2	Oberweite chest measurement	COMFORT FIT		112	120	128	134	148	154	160	168	176	
		MODERN FIT		110	116	122	132	138	146				
		SLIM FIT		102	110	116	124	134					
		SUPER SLIM	98	102	110	116	124						
3	Tailleweite waist measurement	COMFORT FIT		108	114	124	134	148	154	160	168	176	
		MODERN FIT		102	106	114	122	130	138				
		SLIM FIT		92	98	104	112	122					
		SUPER SLIM	79	83	89	95	103						
4	Rumpflänge bei ÄI 65 body length for SL 65	COMFORT FIT		80	80	80	82	90	90	95	95	95	
	MODERN FIT		80	80	80	82	85	90					
	SLIM FIT		80	80	80	80	80	80	80	80	80	80	
	MODERN FIT		80	80	80	80	80	80					
	Rumpflänge bei ÄI 59 body length for SL 59	COMFORT FIT		80	80	80	80	80	80	80	80	80	
	MODERN FIT		80	80	80	80	80	80					
	SLIM FIT		85	85	85	85	90	90	95	95	95		
	MODERN FIT		85	85	85	85	90	90					
	Rumpflänge bei ÄI 68 body length for SL 68	COMFORT FIT		90	90	90	90	90	90	95	95	95	
	MODERN FIT		90	90	90	90	90	90					
	SLIM FIT		90	90	90	90	90	90	95	95	95		
	MODERN FIT		90	90	90	90	90	90					
5	Ärmellänge 1/2 short sleeve	COMFORT FIT		28	28	28	28	30	30	30	30	30	
		MODERN FIT		27	27	27	28	30	30				
		SLIM FIT		24	24	24	24	26					
6	Bündchenlänge cuff length	COMFORT FIT		26	26	26	28	28	28	30	30	30	
		MODERN FIT		26	26	26	28	28	28				
		SLIM FIT		26	26	26	28	28					
		SUPER SLIM	26	26	26	26	28						



NOS-Modelle

NOS styles

MODERN
FIT

Kragen- form collar	Arm- länge sleeves	Modell style	Leiste placket			Tasche pocket		Saum hemline		PATCHUNG Innensteg Kragen mix&match inside collar stand	PATCHUNG Manschette mix&match inside cuff	geteilter Kragensteg half patch	PATCHUNG Passe mix&match yoke	PATCHUNG Untertritt mix&match inside placket	UMA double cuff
			inge- schlagen with fold	Biese button facing	ver- deckt fly front	mit with	ohne without	gerade straight	rund round						
	1/2	C13K	✓				✓		✓	✓				✓	
	1/2	C15K	✓			✓			✓	✓					
	1/2	C187		✓		✓		✓							
	1/2	C19K	✓			✓			✓						
	1/1	X13K	✓				✓		✓	✓				✓	
	1/1	X14K	✓				✓		✓	✓					
	1/1	X19K	✓			✓			✓						
	1/1	X157		✓		✓		✓		✓					
	1/1	X177		✓			✓	✓							
	1/1	X187		✓		✓		✓							
	1/1	X18K	✓				✓		✓						
	1/1	X367				✓		✓	✓						✓
	1/2	C14P	✓				✓		✓	✓					
	1/2	C18P	✓				✓		✓						
	1/1	X14P	✓				✓		✓	✓					
	1/1	X15P	✓			✓			✓	✓					
	1/1	X94P	✓				✓		✓			✓			
	1/2	C143		✓		✓		✓		✓					
	1/1	X143		✓		✓		✓		✓					
	1/1	X14U	✓			✓			✓	✓					
	1/1	X15V	✓				✓		✓	✓					
	1/1	X17V	✓				✓		✓						
	1/1	X48V	✓				✓		✓						✓
	1/1	X362			✓		✓	✓							✓

COVER SHIRT



OPAQUE



NON IRON



100% COTTON



8817 COVER SHIRT TWILL

B

100% BAUMWOLLE | COTTON

X18K CLASSIC KENT

OHNE TASCHE | WITHOUT POCKET

38-46, 48

BLICKDICHT
OPAQUE

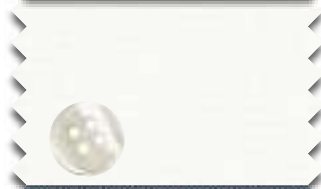


00

X18K



NON IRON



21

X18K



NON IRON



10

X18K



NON IRON



50

X18K



NON IRON

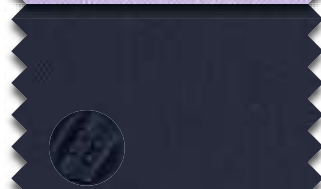


93

X18K



NON IRON

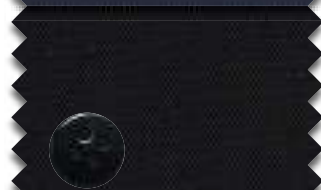


19

X18K



NON IRON



39

X18K



NON IRON

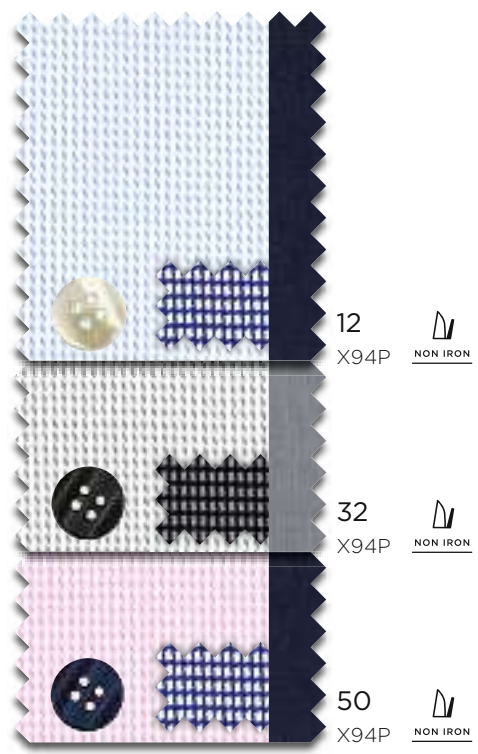
8819 COVER SHIRT TWILL **C**

100% BAUMWOLLE | COTTON
 X15V HAI | SHARK
 OHNE TASCHE | WITHOUT POCKET
 38-46, 48



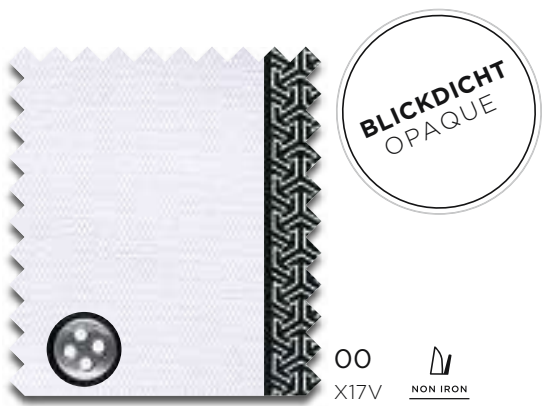
3116 TWILL STRUKTUR **B**

100% BAUMWOLLE | COTTON
 X94P MODERN KENT
 OHNE TASCHE | WITHOUT POCKET
 38-46, 48



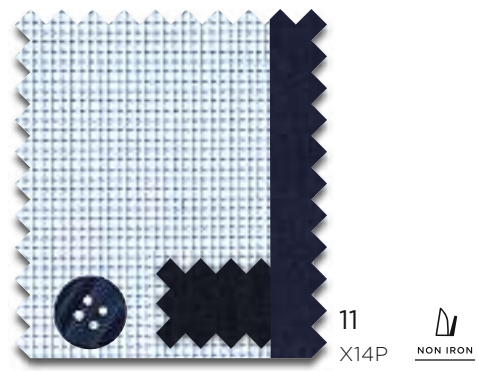
8819 COVER SHIRT TWILL **B**

100% BAUMWOLLE | COTTON
 X17V HAI | SHARK
 OHNE TASCHE | WITHOUT POCKET
 38-46, 48



4671 STRUKTUR **B**

100% BAUMWOLLE | COTTON
 X14P MODERN KENT
 OHNE TASCHE | WITHOUT POCKET
 38-46, 48



1100 UNI POPELINE



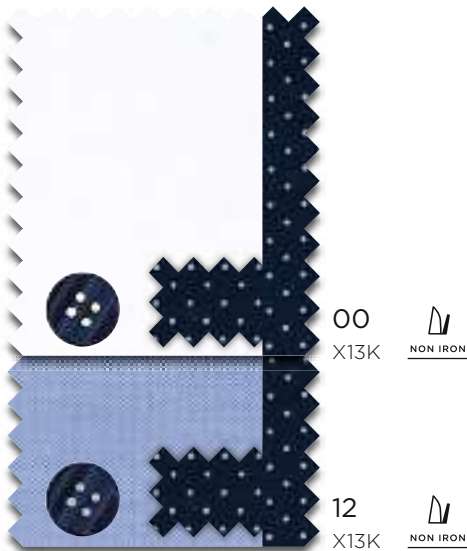
100% BAUMWOLLE | COTTON
 X177 CLASSIC KENT
 OHNE TASCHE | WITHOUT POCKET
 X187 CLASSIC KENT
 MIT TASCHE | WITH POCKET
 37-46, 48



8100 FEIN OXFORD



100% BAUMWOLLE | COTTON
 X13K CLASSIC KENT
 OHNE TASCHE | WITHOUT POCKET
 38-46, 48



3377 PERFORMANCE SHIRT

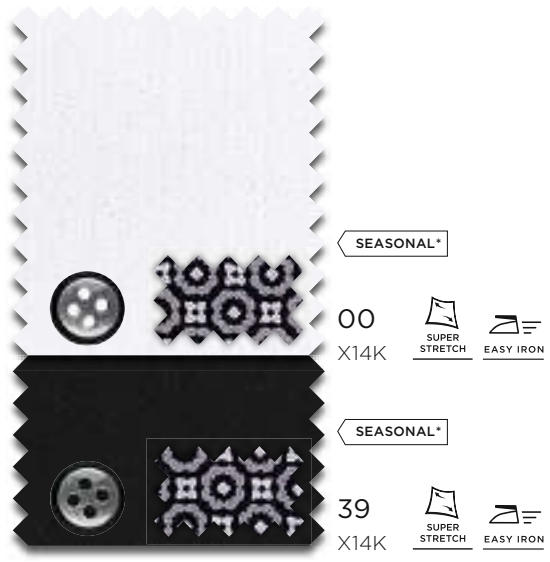


70% LYOCELL | LYOCELL
 26% POLYAMID | POLYAMIDE
 4% ELASTHAN | ELASTANE
 X18K CLASSIC KENT
 OHNE TASCHE | WITHOUT POCKET
 38-46, 48



3377 PERFORMANCE SHIRT **B**

70% LYOCELL | LYOCELL
 26% POLYAMID | POLYAMIDE
 4% ELASTHAN | ELASTANE
 X14K CLASSIC KENT
 OHNE TASCHE | WITHOUT POCKET
 38-46, 48



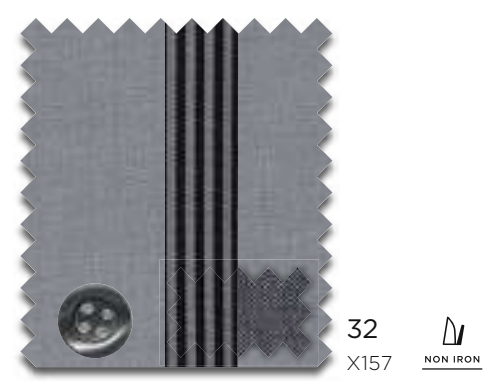
3116 TWILL STRUKTUR **B**

100% BAUMWOLLE | COTTON
 X177 CLASSIC KENT
 OHNE TASCHE | WITHOUT POCKET
 38-46, 48



8500 CHAMBRAY **B**

100% BAUMWOLLE | COTTON
 X157 CLASSIC KENT
 MIT TASCHE | WITH POCKET
 38-46, 48



*SEASONAL: solange Vorrat reicht | as long as stock lasts



3368 UNI TWILL

B

100% BAUMWOLLE | COTTON
X14K CLASSIC KENT
OHNE TASCHE | WITHOUT POCKET
38-46, 48



3475 STRUKTUR

B

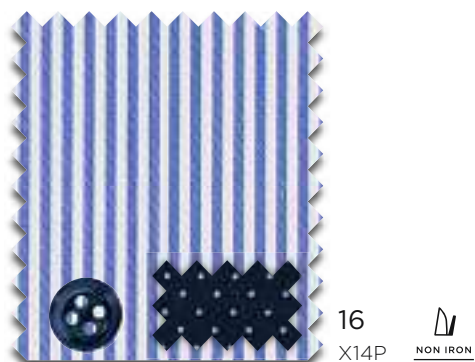
100% BAUMWOLLE | COTTON
X19K CLASSIC KENT
MIT TASCHE | WITH POCKET
38-46, 48



8992 STREIFEN TWILL

B

100% BAUMWOLLE | COTTON
X14P MODERN KENT
OHNE TASCHE | WITHOUT POCKET
38-46, 48



4029 PRINT TWILL

C

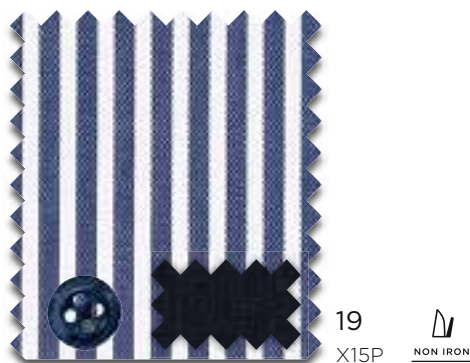
100% BAUMWOLLE | COTTON
X17V HAI | SHARK
OHNE TASCHE | WITHOUT POCKET
38-46, 48



8982 STREIFEN TWILL

B

100% BAUMWOLLE | COTTON
X15P MODERN KENT
MIT TASCHE | WITH POCKET
38-46, 48



8038 STRUKTUR PANAMA



100% BAUMWOLLE | COTTON
 X18K CLASSIC KENT
 OHNE TASCHE | WITHOUT POCKET
 38-46, 48



SEASONAL*

12
 X18K  NON IRON

SEASONAL*

18
 X18K  NON IRON

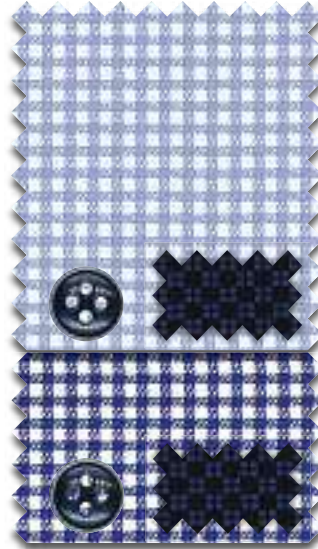
SEASONAL*

56
 X18K  NON IRON

3720 KARO TWILL



100% BAUMWOLLE | COTTON
 X14U MODERN BUTTON-DOWN
 MIT TASCHE | WITH POCKET
 38-46, 48



12
 X14U  NON IRON

17
 X14U  NON IRON

8079 PRINT TWILL



100% BAUMWOLLE | COTTON
 X18K CLASSIC KENT
 OHNE TASCHE | WITHOUT POCKET
 38-46, 48



SEASONAL*

16
 X18K  NON IRON

SEASONAL*

56
 X18K  NON IRON

8917 KARO POPELINE



100% BAUMWOLLE | COTTON
 X143 MODERN BUTTON-DOWN
 MIT TASCHE | WITH POCKET
 38-46, 48



09
 X143  NON IRON

58
 X143  NON IRON

8100 FEIN OXFORD

C

100% BAUMWOLLE | COTTON
 C13K CLASSIC KENT
 OHNE TASCHE | WITHOUT POCKET
 38-46, 48



1100 UNI POPELINE

B

100% BAUMWOLLE | COTTON
 C187 CLASSIC KENT
 MIT TASCHE | WITH POCKET
 37-46, 48



3368 UNI TWILL

B

100% BAUMWOLLE | COTTON
 C15K CLASSIC KENT
 MIT TASCHE | WITH POCKET
 38-46, 48



4029 PRINT TWILL

C

100% BAUMWOLLE | COTTON
 C18P MODERN KENT
 OHNE TASCHE | WITHOUT POCKET
 38-46, 48



*SEASONAL: solange Vorrat reicht | as long as stock lasts



8817 COVER SHIRT TWILL

B

100% BAUMWOLLE | COTTON
 C19K CLASSIC KENT
 MIT TASCHE | WITH POCKET
 38-46, 48

1/2



SEASONAL*

00
 C19K  NON IRON



SEASONAL*

10
 C19K  NON IRON

4671 STRUKTUR

B

100% BAUMWOLLE | COTTON
 C14P MODERN KENT
 OHNE TASCHE | WITHOUT POCKET
 38-46, 48

1/2

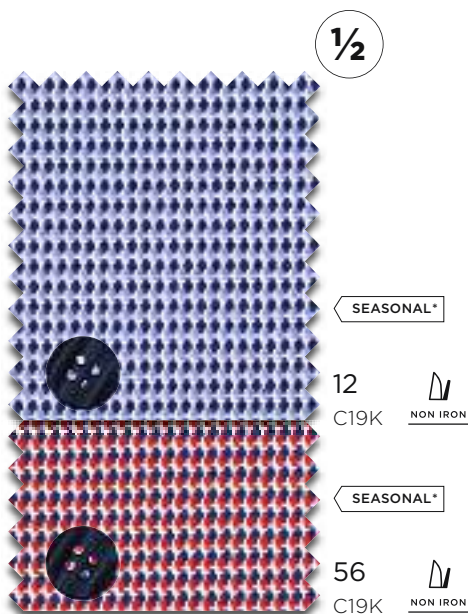


11
 C14P  NON IRON

8038 STRUKTUR PANAMA



100% BAUMWOLLE | COTTON
 C19K CLASSIC KENT
 MIT TASCHE | WITH POCKET
 38-46, 48



8079 PRINT TWILL



100% BAUMWOLLE | COTTON
 C19K CLASSIC KENT
 MIT TASCHE | WITH POCKET
 38-46, 48



8917 KARO POPELINE



100% BAUMWOLLE | COTTON
 C143 MODERN BUTTON-DOWN
 MIT TASCHE | WITH POCKET
 38-46, 48



*SEASONAL: solange Vorrat reicht | as long as stock lasts

COMFORT FIT

BEQUEME
SCHNITTFÜHRUNG.
COMFORTABLE FIT.

1/1



1/2

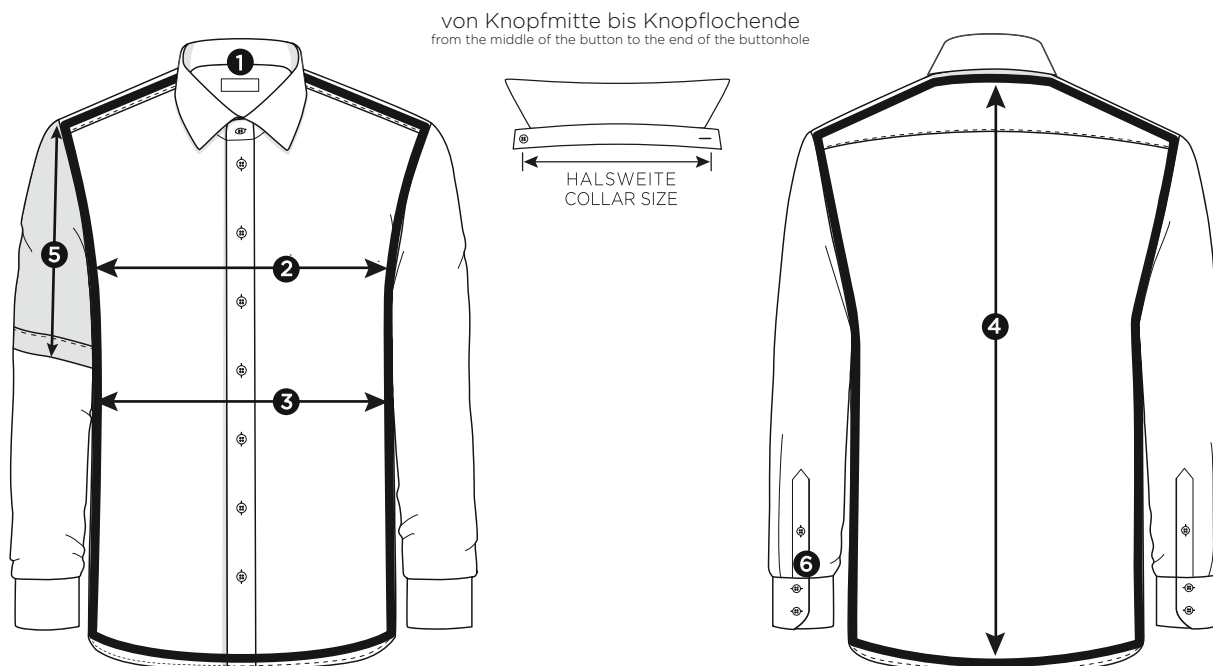


Standard-Maßtabelle

standard measurement chart

COMFORT
FIT

1	Halsweiten collar sizes	cm inch	36 14	37/38 14½/15	39/40 15½/15¾	41/42 16/16½	43/44 17/17½	45/46 17¾/18	47/48 18½/19	49/50 19¼/19½	52 20½	54 21¼	
2	Oberweite chest measurement	COMFORT FIT		112	120	128	134	148	154	160	168	176	
		MODERN FIT		110	116	122	132	138	146				
		SLIM FIT		102	110	116	124	134					
		SUPER SLIM	98	102	110	116	124						
3	Tailllenweite waist measurement	COMFORT FIT		108	114	124	134	148	154	160	168	176	
		MODERN FIT		102	106	114	122	130	138				
		SLIM FIT		92	98	104	112	122					
		SUPER SLIM	79	83	89	95	103						
4	Rumpflänge bei ÄI 65 body length for SL 65	COMFORT FIT		80	80	80	82	90	90	95	95	95	
	MODERN FIT		80	80	80	82	85	90					
	Rumpflänge bei ÄI 59 body length for SL 59	COMFORT FIT		80	80	80	80	80	80	80	80	80	
	MODERN FIT		80	80	80	80	80	80					
	Rumpflänge bei ÄI 68 body length for SL 68	COMFORT FIT		85	85	85	85	90	90	95	95	95	
	MODERN FIT		85	85	85	85	90	90					
	Rumpflänge bei ÄI 72 body length for SL 72	COMFORT FIT		90	90	90	90	90	90	95	95	95	
	MODERN FIT		90	90	90	90	90	90					
5	Ärmellänge 1/2 short sleeve	COMFORT FIT		28	28	28	28	30	30	30	30	30	
		MODERN FIT		27	27	27	28	30	30				
		SLIM FIT		24	24	24	24	26					
6	Bündchenlänge cuff length	COMFORT FIT		26	26	26	28	28	28	30	30	30	
		MODERN FIT		26	26	26	28	28	28				
		SLIM FIT		26	26	26	28	28					
		SUPER SLIM	26	26	26	26	28						



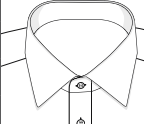
NOS-Modelle

NOS styles

COMFORT
FIT

Kragen- form collar	Arm- länge sleeves	Modell style	Leiste placket			Tasche pocket		Saum hemline		PATCHUNG Innensteg Kragen mix&match inside collar stand	PATCHUNG Manschette mix&match inside cuff	geteilter Kragensteg half patch	PATCHUNG Passe mix&match yoke	PATCHUNG Untertritt mix&match inside placket	UMA double cuff
			eingeschlagen	Biese	verdeckt	mit	ohne	gerade	rund						
			with fold	button facing	fly front	with	without	straight	round						

	CLASSIC KENT	1/1	E137		✓		✓		✓		✓	✓			✓		
		1/1	E147		✓		✓		✓		✓	✓					
		1/1	E15K	✓			✓		✓		✓	✓					
		1/1	E187		✓		✓		✓								
		1/1	E19K	✓			✓			✓							
		1/1	E387			✓		✓	✓								✓
		1/1	E95K	✓			✓		✓		✓	✓					
		1/2	K137		✓		✓		✓						✓		
		1/2	K147		✓		✓		✓								
		1/2	K19K	✓			✓			✓							

	MODERN KENT	1/1	E15P		✓		✓		✓		✓	✓				

	BASIC KENT	1/1	E148		✓		✓		✓		✓	✓					
		1/1	E198		✓		✓		✓								
		1/1	E49E	✓				✓	✓								✓
		1/2	K198		✓		✓		✓								

	CLASSIC BUTTON DOWN	1/1	E14L	✓			✓		✓		✓	✓					
		1/1	E144		✓		✓		✓		✓	✓					
		1/2	K144		✓		✓		✓		✓						

	HAI SHARK	1/1	E15V	✓			✓		✓		✓	✓					
		1/1	E18V	✓			✓		✓								

8817 COVER SHIRT TWILL



100% BAUMWOLLE | COTTON
E19K CLASSICKENT
MIT TASCHE | WITH POCKET

BLICKDICHT OPAQUE

00	XXL	40-50, 52, 54	NON IRON
E19K			
10	XXL	40-50, 52, 54	NON IRON
E19K			
19		40-48	NON IRON
E19K			
39		40-48	NON IRON
E19K			

8819 COVER SHIRT TWILL



100% BAUMWOLLE | COTTON
E18V HAI | SHARK
MIT TASCHE | WITH POCKET
40-48

BLICKDICHT OPAQUE

00			NON IRON
E18V			

8819 COVER SHIRT TWILL



100% BAUMWOLLE | COTTON
E15V HAI | SHARK
OHNE TASCHE | WITHOUT POCKET

BLICKDICHT OPAQUE

00	XXL	40-50, 52, 54	NON IRON
E15V			
10		40-48	NON IRON
E15V			



1100 UNI POPELINE

B

100% BAUMWOLLE | COTTON
 E187 CLASSIC KENT
 MIT TASCHE | WITH POCKET
 E198 BASIC KENT
 MIT TASCHE | WITH POCKET



00
 E187 38-50,
 52, 54
 E198 38-50,
 52, 54
 NON IRON

10
 E187 39-50,
 52, 54
 NON IRON

39
 E187 40-50,
 52, 54
 E198 40-50,
 52, 54
 NON IRON

8100 FEIN OXFORD

C

100% BAUMWOLLE | COTTON
 E137 CLASSIC KENT
 MIT TASCHE | WITH POCKET
 40-50, 52, 54



00
 E137
 NON IRON

12
 E137
 NON IRON

3116 TWILL STRUKTUR

B

100% BAUMWOLLE | COTTON
 E187 CLASSIC KENT
 MIT TASCHE | WITH POCKET
 40-48



38
 E187
 NON IRON

8500 CHAMBRAY

B

100% BAUMWOLLE | COTTON
 E148 BASIC KENT
 MIT TASCHE | WITH POCKET
 40-50, 52, 54



32
 E148
 NON IRON

8038 STRUKTUR PANAMA



100% BAUMWOLLE | COTTON
E19K CLASSIC KENT
MIT TASCHE | WITH POCKET
40-50



SEASONAL*

12
E19K NON IRON

SEASONAL*

18
E19K NON IRON

SEASONAL*

56
E19K NON IRON

8079 PRINT TWILL



100% BAUMWOLLE | COTTON
E19K CLASSIC KENT
MIT TASCHE | WITH POCKET
40-48



SEASONAL*

16
E19K NON IRON

SEASONAL*

56
E19K NON IRON

8917 KARO POPELINE



100% BAUMWOLLE | COTTON
E144 CLASSIC BUTTON DOWN
MIT TASCHE | WITH POCKET



09
E144 40-50 NON IRON

58
E144 40-50, 52, 54 NON IRON

3720 KARO TWILL



100% BAUMWOLLE | COTTON
E14L CLASSIC BUTTON DOWN
MIT TASCHE | WITH POCKET
40-48



12
E14L NON IRON

17
E14L NON IRON

8982 STREIFEN TWILL

B

100% BAUMWOLLE | COTTON
E15K CLASSIC KENT
MIT TASCHE | WITH POCKET
40-50, 52, 54

XXL



19
E15K

NON IRON

8992 STREIFEN TWILL

B

100% BAUMWOLLE | COTTON
E15P MODERN KENT
MIT TASCHE | WITH POCKET
40-50, 52, 54

XXL



16
E15P

NON IRON





3368 UNI TWILL

B

100% BAUMWOLLE | COTTON
E15K CLASSIC KENT
MIT TASCHE | WITH POCKET
40-48

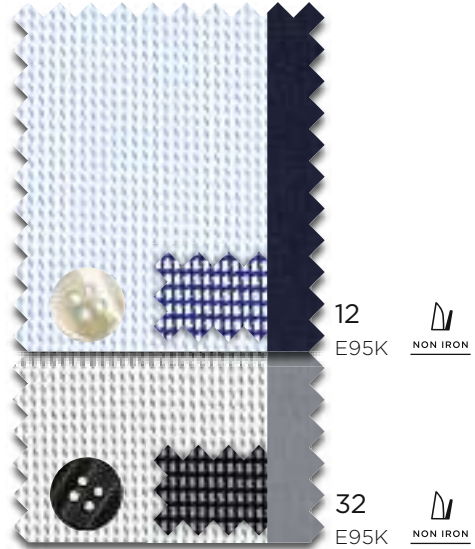


3116 TWILL STRUKTUR

B

100% BAUMWOLLE | COTTON
E95K CLASSIC KENT
MIT TASCHE | WITH POCKET
40-50, 52, 54

XXL



4029 PRINT TWILL

C

100% BAUMWOLLE | COTTON
E18V HAI | SHARK
MIT TASCHE | WITH POCKET
40-48

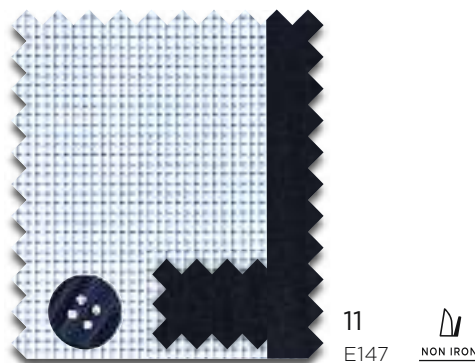


4671 STRUKTUR

B

100% BAUMWOLLE | COTTON
E147 CLASSIC KENT
MIT TASCHE | WITH POCKET
40-50, 52, 54

XXL



*SEASONAL: solange Vorrat reicht | as long as stock lasts



1100 UNI POPELINE

B

100% BAUMWOLLE | COTTON
K198 BASIC KENT
MIT TASCHE | WITH POCKET

XXL

1/2



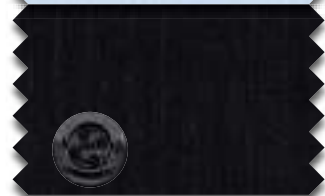
00
K198

NON IRON



10
K198

NON IRON



39
K198

NON IRON

4671 STRUKTUR

B

100% BAUMWOLLE | COTTON
K147 CLASSIC KENT
MIT TASCHE | WITH POCKET

XXL

1/2

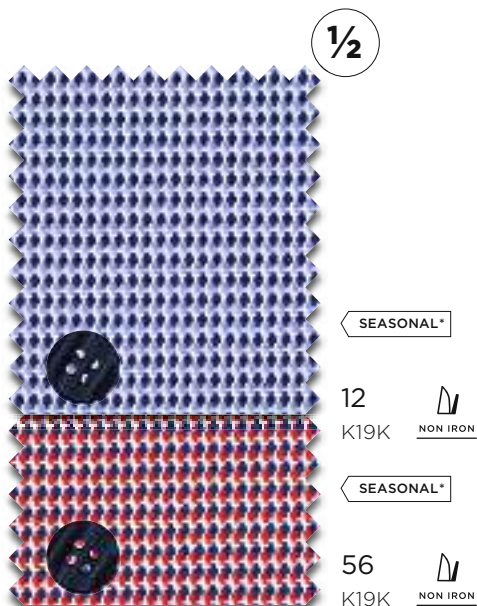


11
K147

NON IRON

8038 STRUKTUR PANAMA **B**

100% BAUMWOLLE | COTTON
 K19K CLASSIC KENT
 MIT TASCHE | WITH POCKET **XXX**
 40-50, 52, 54



8079 PRINT TWILL **B**

100% BAUMWOLLE | COTTON
 K19K CLASSIC KENT
 MIT TASCHE | WITH POCKET
 40-48



8917 KARO POPELINE **B**

100% BAUMWOLLE | COTTON
 K144 CLASSIC BUTTON DOWN
 MIT TASCHE | WITH POCKET **XXX**
 40-50, 52, 54



8100 FEIN OXFORD **C**

100% BAUMWOLLE | COTTON
 K137 CLASSIC KENT
 MIT TASCHE | WITH POCKET **XXX**
 40-50, 52, 54



*SEASONAL: solange Vorrat reicht | as long as stock lasts

1863
— by —
ET ER NA

1863
BY ETERNA
SOFT TAILORING



UNSERE HOCHWERTIGEN HEMDEN DER PREMIUMLINIE 1863 BY ETERNA
INKLUSIVE DER LÄSSIGEN SOFT TAILORING SHIRTS WERDEN DURCH
CO₂-KOMPENSATION KLIMANEUTRAL PRODUZIERT.

OUR HIGH-QUALITY SHIRTS OF THE PREMIUM LINE 1863 BY ETERNA
INCLUDING THE CASUAL SOFT TAILORING SHIRTS ARE PRODUCED
CARBON NEUTRAL THROUGH CO₂ COMPENSATION.

Standard-Maßtabelle

standard measurement chart

MODERN
FIT

SLIM
FIT

1	Halsweiten collar sizes	cm inch	36 14	37/38 14½/15	39/40 15½/15¾	41/42 16/16½	43/44 17/17½	45/46 17¾/18	47/48 18½/19	49/50 19¼/19½	52 20½	54 21¼
2	Oberweite chest measurement	COMFORT FIT		112	120	128	134	148	154	160	168	176
		MODERN FIT		110	116	122	132	138	146			
		SLIM FIT		102	110	116	124	134				
3	Taillenweite waist measurement	COMFORT FIT		108	114	124	134	148	154	160	168	176
		MODERN FIT		102	106	114	122	130	138			
		SLIM FIT		92	98	104	112	122				
4	Rumpflänge body length for SL 65	COMFORT FIT		80	80	80	82	90	90	95	95	95
		MODERN FIT		80	80	80	82	85	90			
	Rumpflänge bei Äl 67 body length for SL 65	SLIM FIT		80	80	80	82	85				
	Rumpflänge Soft Tailoring	MODERN FIT		80	80	80	82	85	90			
		1863 BY ETERNA										
		MODERN FIT		77	77	77	79	82	87			
		SOFT TAILORING										
		SLIM FIT		80	80	80	82	85				
		1863 BY ETERNA										
		SLIM FIT		75	76	77	79	81				
		SOFT TAILORING										
5	Bündchenlänge cuff length	COMFORT FIT		26	26	26	28	28	28	30	30	30
		MODERN FIT		26	26	26	28	28	28			
		SLIM FIT		26	26	26	28	28				

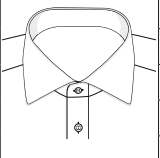
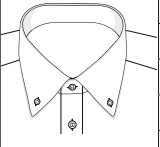
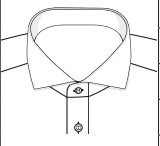


NOS-Modelle

NOS styles

MODERN
FIT

SLIM
FIT

Kragen- form collar	Arm- länge sleeves	Modell style	Leiste placket			Tasche pocket		Saum hemline		PATCHUNG Innensteg Kragen mix&match inside collar stand	PATCHUNG Manschette mix&match inside cuff	geteilter Kragensteg half patch	PATCHUNG Passe mix&match yoke	PATCHUNG Untertritt mix&match inside placket	UMA double cuff
			eingeschlagen	Biese	verdeckt	mit	ohne	gerade	rund						
			with fold	button facing	fly front	with	without	straight	round						
CLASSIC KENT	1/1	■ X687	✓				✓		✓						
	1/1	■ X69K	✓				✓		✓		✓				
	1/1	■ F69K	✓				✓		✓		✓				
CLASSIC BUTTON DOWN	1/1	■ X674	✓				✓		✓						
															
HAI SHARK	1/1	■ X682	✓				✓		✓						
	1/1	■ F682	✓				✓		✓						
	1/1	■ XS82	✓				✓		✓						
	1/1	■ FS82	✓				✓		✓						
	1/1	■ JS82	✓				✓		✓						
	1/1	■ YS82	✓				✓		✓						

8005 UNI TWILL

CO₂ NEUTRAL **C**

100% BAUMWOLLE | COTTON
 X687 CLASSIC KENT - MODERN FIT
 OHNE TASCHE | WITHOUT POCKET
 38-46, 48
 F682 HAI | SHARK - SLIM FIT
 OHNE TASCHE | WITHOUT POCKET **XXL**
 38-46



8128 KARO TWILL

CO₂ NEUTRAL **D**

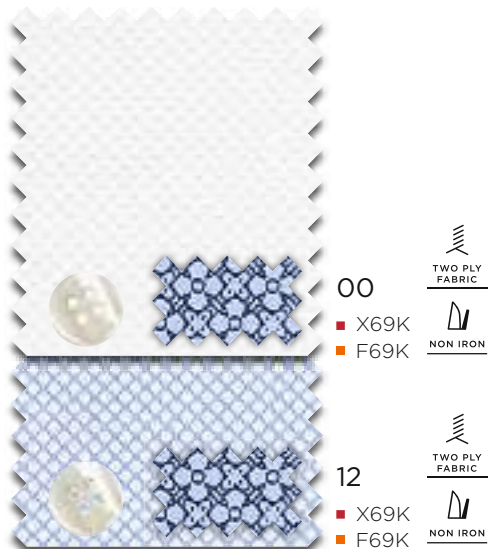
100% BAUMWOLLE | COTTON
 X674 CLASSIC BUTTON-DOWN - MODERN FIT
 OHNE TASCHE | WITHOUT POCKET
 39-46, 48



3960 STRUKTUR

CO₂ NEUTRAL **D**

100% BAUMWOLLE | COTTON
 X69K CLASSIC KENT - MODERN FIT
 OHNE TASCHE | WITHOUT POCKET
 39-46, 48
 F69K CLASSIC KENT - SLIM FIT
 OHNE TASCHE | WITHOUT POCKET
 38-44



3961 STREIFEN TWILL **CO₂** **C**
NEUTRAL

100% BAUMWOLLE | COTTON
X682 HAI | SHARK - MODERN FIT
OHNE TASCHE | WITHOUT POCKET
39-46, 48
F682 HAI | SHARK - SLIM FIT
OHNE TASCHE | WITHOUT POCKET
38-44



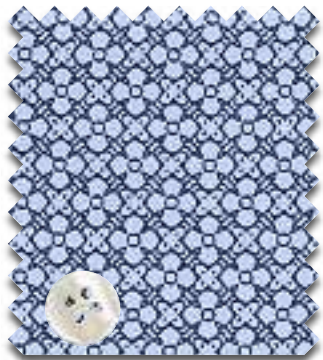
16

■ X682
■ F682



3968 PRINT **CO₂** **D**
NEUTRAL

100% BAUMWOLLE | COTTON
X682 HAI | SHARK - MODERN FIT
OHNE TASCHE | WITHOUT POCKET
39-46, 48
F682 HAI | SHARK - SLIM FIT
OHNE TASCHE | WITHOUT POCKET
38-44



18

■ X682
■ F682





1863

STERN

SLIM FIT

2159 UNI JERSEY

CO₂ NEUTRAL



100% BAUMWOLLE | COTTON
 JS82 HAI | SHARK - MODERN FIT
 OHNE TASCHE | WITHOUT POCKET
 39-46, 48
 YS82 HAI | SHARK - SLIM FIT
 OHNE TASCHE | WITHOUT POCKET
 38-44



00
 ■ JS82
 ■ YS82



17
 ■ JS82
 ■ YS82



19
 ■ JS82
 ■ YS82



39
 ■ JS82
 ■ YS82

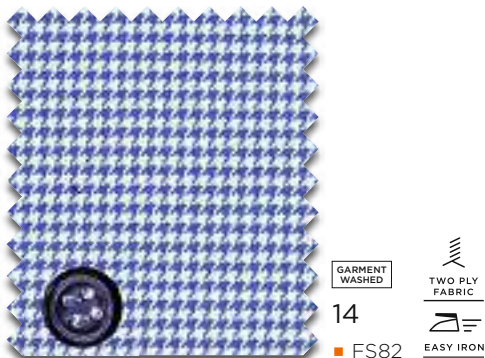


2391 KARO TWILL

CO₂ NEUTRAL



100% BAUMWOLLE | COTTON
 FS82 HAI | SHARK - SLIM FIT
 OHNE TASCHE | WITHOUT POCKET
 38-44



14
 ■ FS82

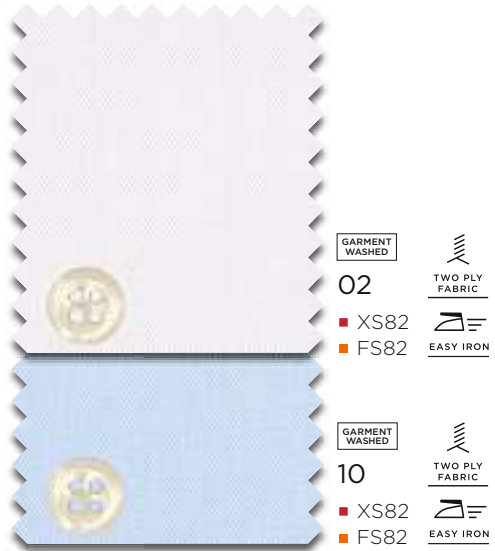


3850 UNI TWILL

CO₂ NEUTRAL



100% BAUMWOLLE | COTTON
 XS82 HAI | SHARK - MODERN FIT
 OHNE TASCHE | WITHOUT POCKET
 38-46, 48
 FS82 HAI | SHARK - SLIM FIT
 OHNE TASCHE | WITHOUT POCKET
 38-44



02
 ■ XS82
 ■ FS82

GARMENT WASHED

TWO PLY FABRIC



10
 ■ XS82
 ■ FS82

GARMENT WASHED

TWO PLY FABRIC

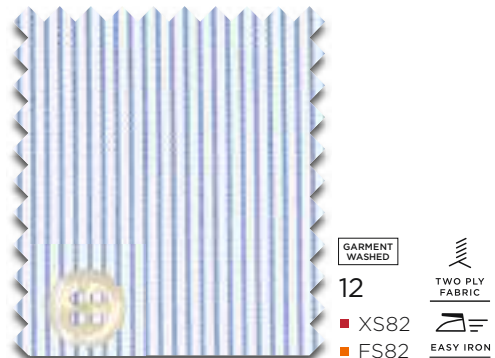


2357 STREIFEN TWILL

CO₂ NEUTRAL



100% BAUMWOLLE | COTTON
 XS82 HAI | SHARK - MODERN FIT
 OHNE TASCHE | WITHOUT POCKET
 38-46, 48
 FS82 HAI | SHARK - SLIM FIT
 OHNE TASCHE | WITHOUT POCKET
 38-44



12
 ■ XS82
 ■ FS82

GARMENT WASHED

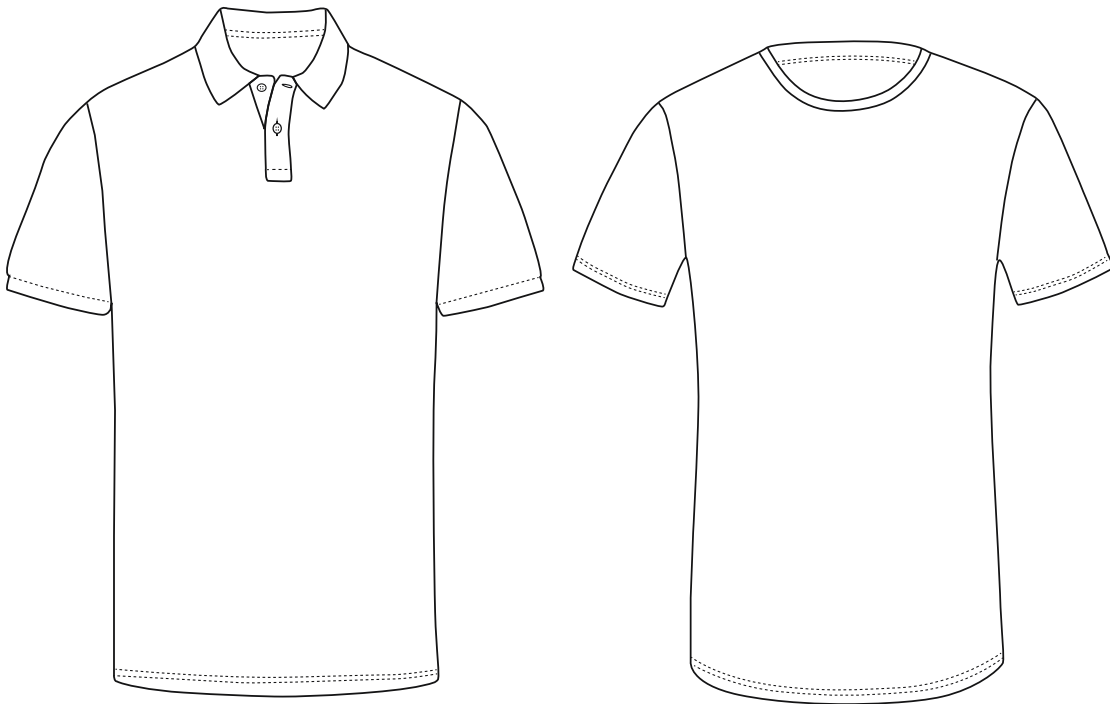
TWO PLY FABRIC



super soft
 quality

T-SHIRTS & POLOS

1/2





2225 PERFORMANCE POLO



56% BAUMWOLLE | COTTON
 39% POLYESTER | POLYESTER
 5% ELASTHAN | ELASTANE
 G16P CLASSIC KENT
 OHNE TASCHE | WITHOUT POCKET
 S-XXL



Standard-Maßtabelle

standard measurement chart

1	MESS-STRECKE MEASURING TRACK		S	M	L	XL	XXL
2	Oberweite chest measurement	SLIM FIT	96	102	110	118	128
3	Taillenweite waist measurement	SLIM FIT	90	94	102	110	120
4	Rumpflänge body length	SLIM FIT	72	72	74	76	76
5	Ärmellänge 1/2 short sleeve	SLIM FIT	23	23	24	24	25

2227 UNI PIQUÉE POLO

B

100% BAUMWOLLE | COTTON
RF12 HAI | SHARK
OHNE TASCHE | WITHOUT POCKET
M-4XL



1/2 POLO

Standard-Maßtabelle

standard measurement chart

1	MESS-STRECKE MEASURING TRACK		M	L	XL	XXL	3XL	4XL
2	Oberweite chest measurement	REGULAR FIT	110	118	126	138	146	154
3	Taillenweite waist measurement	REGULAR FIT	102	110	118	130	138	146
4	Rumpflänge body length	REGULAR FIT	74	76	78	78	78	84
5	Ärmellänge 1/2 short sleeve	REGULAR FIT	24	25	25	26	26	27

*SEASONAL: solange Vorrat reicht | as long as stock lasts



887 T-SHIRT

70% BAUMWOLLE | COTTON
 30% LYOCELL | LYOCELL
 S-3XL



1863
 by
 ETERNA

Standard-Maßtabelle
 standard measurement chart

1	MESS-STRECKE MEASURING TRACK	S	M	L	XL	XXL	3XL
2	Oberweite chest measurement	100	106	114	122	134	146
3	Rumpflänge body length	72,5	72,5	74,5	76,5	76,5	76,5

800 | 801 | 804 BODYWEAR

1/2 T-SHIRT



- 800 V-AUSSCHNITT | V-NECK
- 801 RUNDHALS | ROUND NECK
- 804 TIEFERER V-AUSSCHNITT | EXTENDED V-NECK
- 92% BAUMWOLLE | COTTON
- 8% ELASTHAN | ELASTANE
- S-XXL

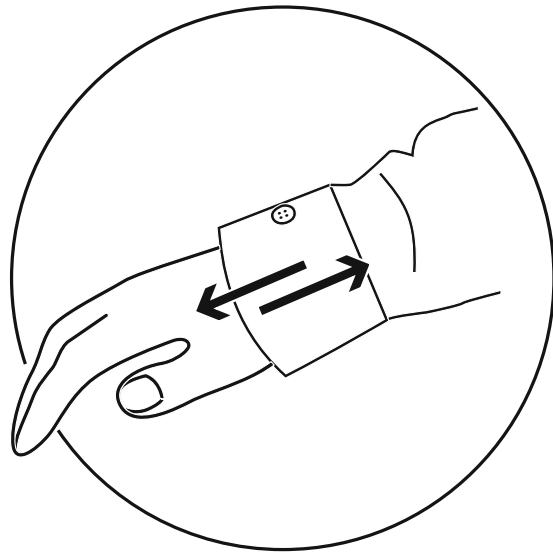


Standard-Maßtabelle
standard measurement chart

1	MESS-STRECKE MEASURING TRACK	S	M	L	XL	XXL
2	Oberweite chest measurement	96	100	104	108	112
3	Rumpflänge body length	72,5	73,5	74,5	75,5	76,5

ÄRMELLÄNGEN

SLEEVE LENGTHS



1100 UNI POPELINE

B

100% BAUMWOLLE | COTTON
X177 CLASSIC KENT
OHNE TASCHE | WITHOUT POCKET
38-46, 48



39
■ X177 NON IRON

8817 COVER SHIRT TWILL

B

100% BAUMWOLLE | COTTON
E19K CLASSIC KENT
MIT TASCHE | WITH POCKET
X18K CLASSIC KENT
OHNE TASCHE | WITHOUT POCKET



00
■ E19K 40-48
■ X18K 38-46,48 NON IRON

10
■ E19K 40-48
■ X18K 38-46,48 NON IRON

3720 TWILL KARO

B

100% BAUMWOLLE | COTTON
X14U MODERN BUTTON DOWN
MIT TASCHE | WITH POCKET
40-46, 48



17
■ X14U NON IRON

8100 FEIN OXFORD

C

100% BAUMWOLLE | COTTON
E137 CLASSIC KENT
MIT TASCHE | WITH POCKET
X13K CLASSIC KENT
OHNE TASCHE | WITHOUT POCKET



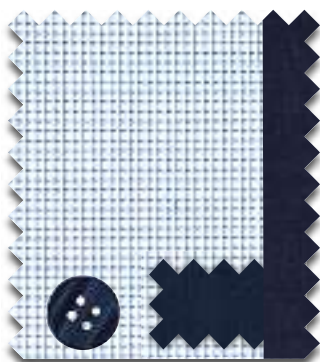
00
■ X13K 38-46,48 NON IRON

12
■ E137 40-48
■ X13K 38-46,48 NON IRON

4671 STRUKTUR

B

100% BAUMWOLLE | COTTON
X14P MODERN KENT
OHNE TASCHE | WITHOUT POCKET



11
■ X14P 38-46, 48 NON IRON

59 Ärmellänge
sleeve length

COMFORT
FIT

MODERN
FIT

SLIM
FIT

8817 COVER SHIRT TWILL

B

- 100% BAUMWOLLE | COTTON
- E19K CLASSIC KENT
MIT TASCHE | WITH POCKET
- X18K CLASSIC KENT
OHNE TASCHE | WITHOUT POCKET



00

- E19K 39-48
- X18K 38-46,48



72 Ärmellänge
sleeve length

8817 COVER SHIRT TWILL

B

- 100% BAUMWOLLE | COTTON
- E19K CLASSIC KENT
MIT TASCHE | WITH POCKET
- X18K CLASSIC KENT
OHNE TASCHE | WITHOUT POCKET
- F182 HAI | SHARK
OHNE TASCHE | WITHOUT POCKET



00

- E19K 40-48
- X18K 38-46, 48
- F182 38-46



10

- X18K 38-46, 48



8817 COVER SHIRT TWILL

C

- 100% BAUMWOLLE | COTTON
- VERDECKTE KNOPFLEISTE | FLY FRONT | GORGE CACHÉE
- X367 CLASSIC KENT
OHNE TASCHE | WITHOUT POCKET
- F392 HAI | SHARK
OHNE TASCHE | WITHOUT POCKET



00

- X367 38-46, 48
- F392 38-46



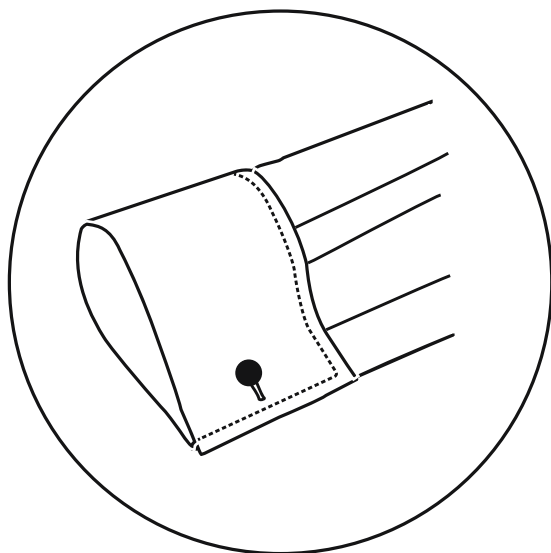
21

- X367 38-46, 48
- F392 38-46



GALA UMSCHLAGMANSCHETTE

DRESS SHIRTS | DOUBLE CUFF



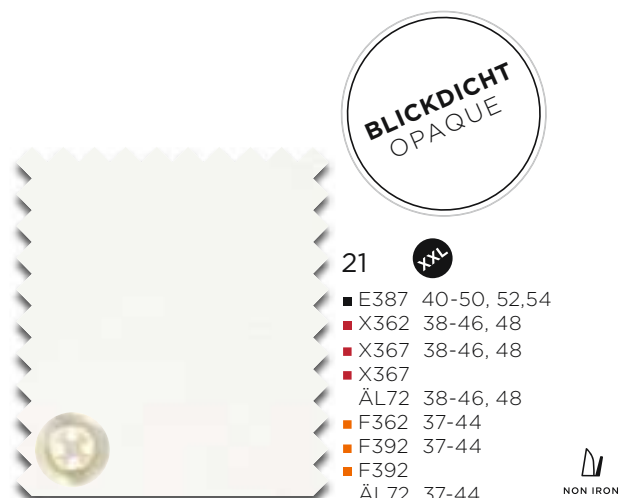
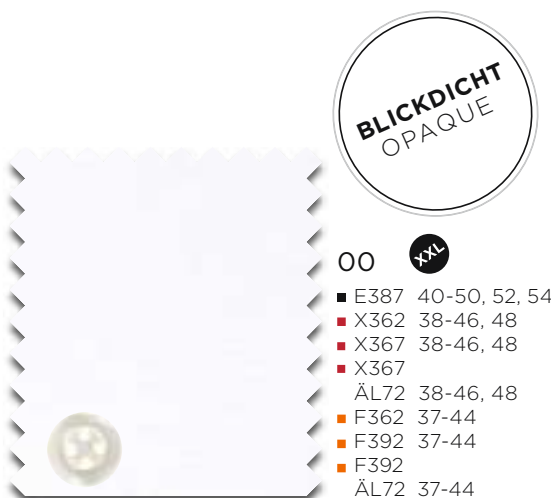


8817 COVER SHIRT TWILL **C**

100% BAUMWOLLE | COTTON
VERDECKTE KNOPFLEISTE | FLYFRONT | GORGE CACHÉE
E387 CLASSIC KENT
OHNE TASCHE | WITHOUT POCKET
X362 KLÄPPCHEN | WING
OHNE TASCHE | WITHOUT POCKET
X367 CLASSIC KENT
OHNE TASCHE | WITHOUT POCKET
F362 KLÄPPCHEN | WING
OHNE TASCHE | WITHOUT POCKET
F392 HAI | SHARK
OHNE TASCHE | WITHOUT POCKET

8817 COVER SHIRT TWILL **C**

100% BAUMWOLLE | COTTON
VERDECKTE KNOPFLEISTE | FLYFRONT | GORGE CACHÉE
E387 CLASSIC KENT
OHNE TASCHE | WITHOUT POCKET
X362 KLÄPPCHEN | WING
OHNE TASCHE | WITHOUT POCKET
X367 CLASSIC KENT
OHNE TASCHE | WITHOUT POCKET
F362 KLÄPPCHEN | WING
OHNE TASCHE | WITHOUT POCKET
F392 HAI | SHARK
OHNE TASCHE | WITHOUT POCKET



UMA
double cuff

COMFORT
FIT

MODERN
FIT

SLIM
FIT



F482

8817 COVER SHIRT TWILL



- 100% BAUMWOLLE | COTTON
 UMSCHLAGMANSCHETTE | DOUBLE CUFF
 E49E BASIC KENT
 OHNE TASCHE | WITHOUT POCKET
 X48V HA | SHARK
 OHNE TASCHE | WITHOUT POCKET
 F482 HA | SHARK
 OHNE TASCHE | WITHOUT POCKET

**BLICKDICHT
OPAQUE**

00 **XXL**

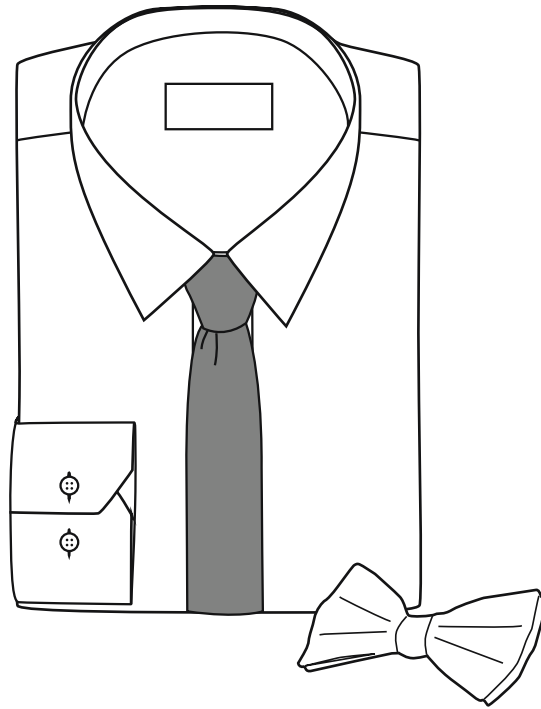
■ E49E	40-50, 52, 54
■ X48V	38-46,48
■ F482	38-44

NON IRON



ACCESSOIRES

ACCESSORIES





Socken

socks



Artikel/art.: 600
Größe/size: 39 - 42 / 43 - 46 / 47 - 48
Farbe/colour: 39/35/19

Qualität/quality:
98% Baumwolle/98% cotton
2% Elasthan/2% elastane

Gürtel

belts

Längen 90-110 cm (in 5 cm Schritten) verfügbar | Lengths 90-110 cm available (in 5 cm increments)



653/19
32 mm

69% POLYPROPYLEN | POLYPROPYLENE
31% LATEX



653/22
32 mm

69% POLYPROPYLEN | POLYPROPYLENE
31% LATEX



650/39 WENDEGÜRTEL
REVERSIBLE BELT
32 mm

100% RINDSLEDER | COWHIDE



651/29
30 mm

100% RINDSLEDER | COWHIDE



651/39
30 mm

100% RINDSLEDER | COWHIDE

Manschettenknöpfe | Krawattennadeln

cuff links | tie pins



141/00



120/00



142/00



144/00



137/19



143/00



138/00



106/00



102/00

Schleife

bow tie

100% Seide | silk



9970/00



9970/50



9970/19



9970/39

Einstecktuch

pocket handkerchief

100% Baumwolle | cotton



200/00

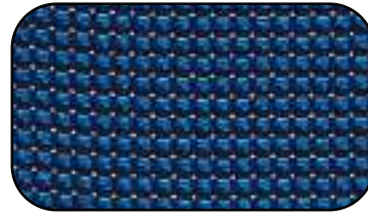
Krawatte

tie

100% Seide | silk **6 cm**



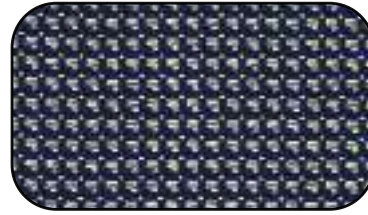
9029/10



9504/15



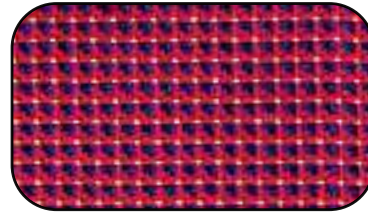
9029/15



9504/21



9029/19



9504/55



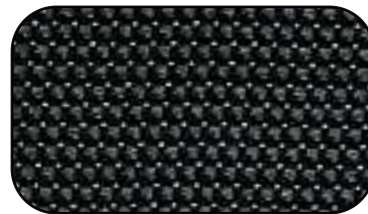
9029/55



9504/58



9029/58



9504/39



9029/35



9029/39

Krawatte

tie

100 % Seide | silk **6 cm**



9503/15



9505/15



9503/19



9505/55



9503/58



9505/58



9503/39



9505/39

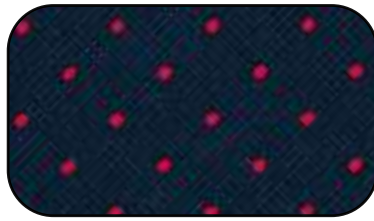
Krawatte

tie

100 % Seide | silk **7,5 cm**



9716/19



9026/15



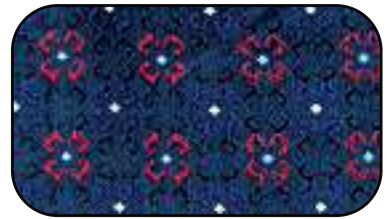
9502/15



9716/57



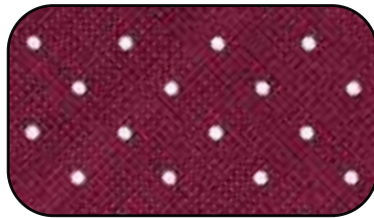
9026/19



9502/19



9716/39



9026/58



9502/58

Krawatte

tie

100 % Seide | silk **7,5 cm**



9024/10



9501/15



9500/15



9024/19



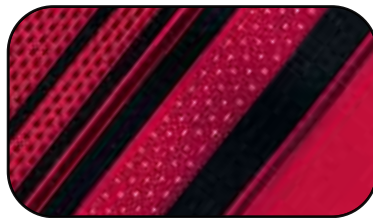
9501/19



9500/19



9024/55



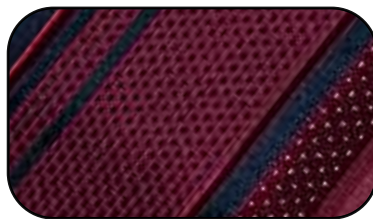
9501/55



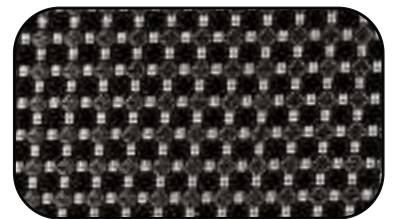
9500/55



9024/58



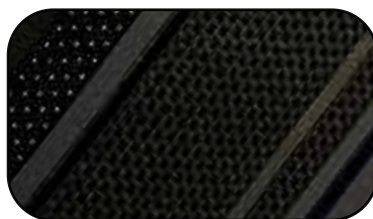
9501/58



9500/39



9024/39



9501/39

KONTAKTDATEN

CONTACT DETAILS



NATIONAL SALES DEPARTMENT:

Tel.: + 49 851 98 16 - 200
Fax: + 49 851 98 16 - 470
E-Mail: nationalsales@eterna.de

WIR SIND TELEFONISCH ZU
FOLGENDEN ZEITEN ERREICHBAR:
MO-DO 8.00 - 17.00 UHR
FREITAG 8.00 - 16.00 UHR

WE ARE AT YOUR DISPOSAL FROM MONDAY
TO THURSDAY FROM 08.00 TO 17.00
AND ON FRIDAY FROM 08.00 TO 16.00.

IHR BETREUENDER AUSSENDIENST:

your agent

Thüringen/Sachsen-Anhalt/
Berlin/Brandenburg/Sachsen
Tino Eckelt
Mob.: +49 170 23 0 19 74
E-Mail: tino.eckelt@eterna.de
Showroom:
Mitteldeutsches Mode Center
Haus C, 2. OG, Raum-Nr. 254
Münchener Ring 2
04435 Schkeuditz bei Leipzig

Nordrhein-Westfalen
Modeagentur Wörmann
Carsten Wörmann
Oberschelps Feld 31
33739 Bielefeld
Tel.: +49 521 98 91 95 93
Mob.: +49 172 2 87 31 71
Fax: +49 521 98 91 95 94
E-Mail: carsten-woermann@web.de
Showroom:
Halle 30
Derendorfer Allee 12
40476 Düsseldorf
Tel.: +49 211 46 95 87 00
Fax: +49 211 46 95 87 01

Mecklenburg-Vorpommern
Hamburg/Schleswig-Holstein
André Simonsen
Mob.: +49 151 40 55 84 07
E-Mail: andre.simonsen@eterna.de
Showroom:
Modezentrum Hamburg
Haus M11, Etage 1, Raum 117
Modering 11
22457 Hamburg
Tel.: +49 40 18 07 27 87
Fax: +49 40 58 96 94 01

München/Obb./Schwaben
Stefan Rindle
Mob.: +49 170 2 24 80 12
E-Mail: stefan.rindle@eterna.de
Showroom:
MTC München, Haus 4 / Raum 402
Taususstr. 45
80807 München
Tel.: +49 89 35 00 37 28
Fax: +49 89 35 00 39 36

Bremen/Niedersachsen
Jochen Schreier
Fashion - Lifestyle & Service GmbH & Co. KG
Bussardweg 27
33659 Bielefeld
Tel.: +49 521 94 73 813
Mob.: +49 172 5 21 16 63
Fax: +49 521 94 73 811
E-Mail: jochen.schreier@gmail.com
Showroom:
Modezentrum Hamburg
Haus M11, Etage 1, Raum 117
Modering 11
22457 Hamburg
Tel.: +49 40 18 07 27 87
Fax: +49 40 58 96 94 01

Ost-Bayern
Tobias Orttenburger
Mob.: +49 171 6 83 57 66
E-Mail: tobias.orttenburger@eterna.de
Showroom:
MTC München, Haus 4 / Raum 402
Taususstr. 45
80807 München
Tel.: +49 89 35 00 37 28
Fax: +49 89 35 00 39 36

Baden-Württemberg/Nord-Bayern
Hessen, Rheinland-Pfalz, Saarland
Agentur Bosshardt
Brand Synergy GmbH
Guido Bosshardt
Mob.: +49 173 7 00 67 00
E-Mail: info@brandsynergy.net
Showroom:
Haus der Mode
Haus 1 Etage 6 Raum 619
Kölner Straße 1
65760 Eschborn

6.OG - Raum 603
Mahdentalstraße 96-98
71065 Sindelfingen

INTERNATIONAL SALES DEPARTMENT:

Tel.: +49 851 98 16 - 599
Fax: +49 851 98 16 - 467
E-Mail: export@eterna.de

WIR SIND TELEFONISCH ZU
FOLGENDEN ZEITEN ERREICHBAR:
MO-DO 8.00 - 17.00 UHR
FREITAG 8.00 - 14.00 UHR

WE ARE AT YOUR DISPOSAL FROM MONDAY
TO THURSDAY FROM 08.00 TO 17.00
AND ON FRIDAY FROM 08.00 TO 14.00.

IHR BETREUENDER AUSSENDIENST:

your agent

A

Tirol/Vorarlberg/Steiermark/
Oberösterreich/Salzburg

Wolfgang Ratzenböck

Kirchbergfeld 20
A-4792 Münzkirchen
Mob.: +43 664 3 84 60 60
Fax: +43 7716 65 66
E-Mail: wolfgang.ratzenboeck@aon.at

Showroom:
Fashion-Mall Salzburg / Top 5
Carl-Zuckmayer-Str. 37
5028 Salzburg

Kärnten/Osttirol
Wien/Niederösterreich/Burgenland

Agentur Manuela Zechner

Bucherlweg 74a
A-8074 Raaba-Grambach
Mob.: +43 664 302 2000
E-Mail: thomas-zechner@aon.at

Showroom:
Fashion-Mall Salzburg / Top 5
Carl-Zuckmayer-Str. 37
5028 Salzburg

CH

Beutler fashion group Dominik Bünter

Mob.: +41 79 951 34 67
E-Mail: eterna@beutler.ch

TMC Galleria
Thurgauerstr. 119 EG
CH-8152 Glattbrugg ZH

F

OTT FASHION

Service Commercial/Showroom:
Aéroparc 3
3 rue du Tonnelier
F-67960 Entzheim
Tél.: +33 3 88 32 39 52
Fax: +33 9 70 32 04 53
E-Mail: ottfashion@gmx.fr

Gérant
Francis Glasser
Portable: +33 07 60 59 24 04

S

Menswear For Sweden AB Kenny Gustafsson

Fashion House
Göteborgsvägen 89
431 30 Mölndal
Tel.: +46 723 959286
E-Mail: kgagenturer@gmail.com

N

Sæther & Sørnæs AS

Norwegian fashion center
Rom 5E-03
Snarøyveien 30, 1360 Fornebu
Tel.: +47 2300 1585
Fax: +47 2300 1775
E-Mail:
ordre@sether-sornes.no
post@sether-sornes.no
www.sether-sornes.no

NL

Enthoven Agenturen B. V.

Léon Enthoven
Weteringsingel 14
NL-3353 GZ Papendrecht
Tel.: +31 78 644 17 17
E-Mail: leon@enthoven-agenturen.nl

DK

Henrik C. Svendsen Tekstilagentur I/S

Sadolinsvænget 7
DK-5230 Odense M.
Tel.: +45 6591 0072
E-Mail: kontor@hcs-tekstilagentur.dk
Internet: eternadanmark.dk

Showroom:
Cliff Show-Rooms / Bella-Center

INTERNATIONAL
SALES DEPARTMENT:

Tel.: +49 851 98 16 - 599
Fax: +49 851 98 16 - 467
E-Mail: export@eterna.de

WIR SIND TELEFONISCH ZU
FOLGENDEN ZEITEN ERREICHBAR:
MO-DO 8.00 - 17.00 UHR
FREITAG 8.00 - 14.00 UHR

WE ARE AT YOUR DISPOSAL FROM MONDAY
TO THURSDAY FROM 08.00 TO 17.00
AND ON FRIDAY FROM 08.00 TO 14.00.

IHR BETREUENDER AUSSENDIENST:

your agent

GB

McCotter Agencies Ltd.
Suite 3 · 9-15 Queen Street
Belfast BT1 6EA/N. Ireland
Tel.: +44 28 9032 7770
E-Mail: eterna@mccotterandson.co.uk

Bill McCotter
Mob.: +44 7748 187917
E-Mail: bill@mccotterandson.co.uk

Neal McCotter
Mob.: +353 87 2563016
Mob.: +44 7920 187227
E-Mail: neal@mccotterandson.co.uk

IRL

McCotter Agencies Ltd.
Suite 3 · 9-15 Queen Street
Belfast BT1 6EA/N. Ireland
Tel.: +44 28 9032 7770
Fax: +44 28 9032 7776
E-Mail: eterna@mccotterandson.co.uk

Bill McCotter
Mob.: +44 7748 187917
E-Mail: bill@mccotterandson.co.uk

Neal McCotter
Mob.: +353 87 2563016
Mob.: +44 7920 187227
E-Mail: neal@mccotterandson.co.uk

I

Emilia-Romagna:
Andrea Orsoni
Via Ferrarese 3
40128 Bologna
Mob.: +39 33 53 41 185
E-Mail: orsonii@gmail.com

Friaul-Venezia-Giulia,
Trentino, Veneto, Alto Adige:
**Granzotto Rappresentanze SAS
di Granzotto Giuseppe e c.**
Via Venezia 5
I-35020 Casalserugo (PD)
Mob.: +39 348 420 7906
E-Mail: granzotto.giuseppe@gmail.com

CZ, SK

MGTRADE s.r.o.
Renata de la Sierra
Gorazdova 34,
81104 Bratislava
Slowakei
Mob.: +421 905 947 344
E-Mail: renka.eterna@gmail.com

PL

P&P Piotr Polowiec
Proszówki 211A
32-700 Bochnia
Poland
Mob.: +48 512538412
E-Mail: p.p.polowiec@gmail.com

UA, MD

Natalia & Pavel Cojocar
Tel.: +49 211 7489069
Mob.: +49 160 97311333
Mob. Ukraine: +380 50 8691632
Mob. Moldawien: +373 68 704430
E-Mail: eterna-cojocar@online.de

GR

**WORLD OF FASHION PC
MARIA I. GRAMMATIKA GROUP**
57 Ag. Basileioy Str. 12135 Peristeri
Greece
Tel.: +30 2105739343
E-Mail: w-o-f@otenet.gr

INTERNATIONAL SALES DEPARTMENT:

Tel.: +49 851 98 16 - 599
Fax: +49 851 98 16 - 467
E-Mail: export@eterna.de

WIR SIND TELEFONISCH ZU
FOLGENDEN ZEITEN ERREICHBAR:
MO-DO 8.00 - 17.00 UHR
FREITAG 8.00 - 14.00 UHR

WE ARE AT YOUR DISPOSAL FROM MONDAY
TO THURSDAY FROM 08.00 TO 17.00
AND ON FRIDAY FROM 08.00 TO 14.00.

IHR BETREUENDER AUSSENDIENST:

your agent

HU

Gárdos Agentura Kft.
H-2040 Budaörs Fashion Trend Center
Gyár u. 2. + 1. emelet 3.29-3.31
Tel./Fax: +36 1 452 7281
Mob.: +36 30 925 5188
E-Mail: office@gardosagentura.hu

CDN

Silvio Marando
9310 boul. St-Laurent, Suit 1018
Montreal, QC/Canada
H2N 1N4
Tel.: +1 514 273 6663
Fax: +1 514 273 4082
E-Mail: info@silviomarando.com

SI, HR, RS, ME, BA, MK

Mirz.d.o.o.
Mitja Zrim
Vrbisce 17a
SLO-9000 Murska Sobota
Tel.: +386 2 526 13 25
Mob.: +386 40 472 925
Fax: +386 2 620 08 79
E-Mail: mitja.zrim@mirz.si

AUS

Brand Equity Pty Ltd
Mark Cook
7/30-32 Beaconsfield St
Alexandria NSW 2015
Australia
Tel.: +61 2 9693 5800
Mob.: +61 410 60 9597
Fax: +61 2 9693 5700
E-Mail: sales@kencook.com.au

BE, LU

Woodville fashion agency bvba
Showroom:
Trade Mart - Fashion Gardens -
Firenze F110
Atomiumlaan 1 PB33
1020 Brussels
Belgium

Hannelore Engelbosch
Tel.: +32 477 29 20 71
E-Mail: info@eternabelux.be

Francis Ryckmans
Tel.: +32 478 55 56 86
E-Mail: info@eternabelux.be

FIN

PITKIS OY
Esa Pitkäranta
Uitonsalmentie 83 A
40950 Muurame
Finland
Tel.: +358 400 844836
E-Mail: esa@pitkis.fi

JO, KW, LB, SY, IR, EG, TN, IQ, OM, BH, MA, QA, AE

Fehmi Chama GmbH & Co. KG
Otto-Hahn-Str. 2
D-85609 Dornach / Aschheim
Tel: +49-89-99 40 33 -21
Fax: +49-89-99 40 33 -30
f.chama@chama-fashion.de

RO

S.C. Transtex SRL
STR. Tarnavei nr.2
545400 SIGHISOARA
Contact: Erdos Nicoleta
Tel.: +40 265 77 22 99
Fax: +40 265 77 46 51
E-Mail: vanzari@transtex.ro
office@transtex.ro





WWW.ETERNA.DE