



**NOS FRÜHLING/SOMMER 2021**

NOS SPRING/SUMMER 2021

01.01.2021 - 30.06.2021

**E T E R N A**

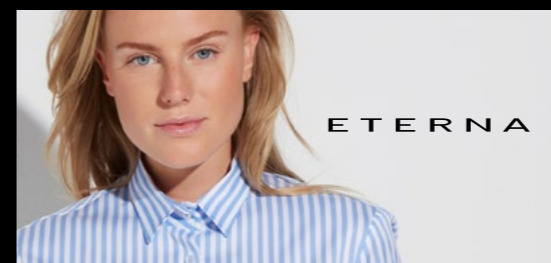
” DIE BLUSE IST DAS KEYPIECE IHRES OUTFITS.  
BEI ETERNA FINDEN SIE IMMER DIE PASSENDE BLUSE,  
UM EINEN MODERNEN LOOK ZU KREIEREN. ”

THE BLOUSE IS THE KEYPIECE OF YOUR OUTFIT.  
AT ETERNA YOU WILL ALWAYS FIND THE MATCHING BLOUSE  
TO CREATE A MODERN LOOK.

Sylvia Haine, Head of Design

# ETERNA BLUSEN PRODUKTLINIEN

PRODUCT LINES OF ETERNA BLOUSES



## MODERN CLASSIC

Zeitlose Modernität und  
perfekt sitzende Passformen

Timeless modernity and perfectly fitting fits

KLASSISCHE BLUSENFORMEN UND  
DESSINS FÜR BUSINESS UND FREIZEIT.

Classic shapes and designs for  
business and leisure.

AUCH IN KÖRPERNAHEN SLIM-FIT-FORMEN.

Also available in body-hugging Slim Fit shapes.



## 1863 BY ETERNA

Für Frauen, die  
das Besondere suchen

For women who looking for something special

MODERNE SCHNITTE VERBUNDEN MIT  
QUALITATIV HOCHWERTIGEN STOFFEN.

Modern fits combined with  
high quality fabrics.

FITTED-MODELLE IN KÖRPERNAHER SILHOUETTE.

Fitted styles creating a body-hugging silhouette.





# WIR MACHEN ÖKO WIEDER LOGISCH!

EINFACH #NATURALLY: Wir handeln selbstverständlich nachhaltig. Für ETERNA ist es ganz natürlich, Mode und Umwelt miteinander zu vereinen.

We make eco logical again! SIMPLY #NATURALLY: We act sustainably as a matter of course. For ETERNA it is natural to unite fashion and environment.

**ZERTIFIZIERT  
MIT HÖCHSTEM STANDARD**

Wir sind bereits **seit 20 Jahren** – als weltweit erster Hersteller in der Modewelt – mit dem höchsten OEKO-TEX®-Standard zertifiziert.

We have been certified with the highest OEKO-TEX® standard for **20 years** - as the world's first manufacturer in the fashion world.



**KLIMANEUTRALE  
FERTIGUNG**

Große Teile der Produktion u. a. die Premiumlinie **1863 by ETERNA** und die WE CARE Kollektionen werden durch Kompensationsleistung **CO<sub>2</sub>-neutral gefertigt**.

Large parts of the production are made CO<sub>2</sub> neutral by compensation payments - also our premium line 1863 by ETERNA and our WE CARE collections.

**WE CARE  
KOLLEKTION**

Die WE CARE Kollektion vereint **gelebte Nachhaltigkeit** mit einem modernen **Casual Look** und besteht ausschließlich aus **nachwachsenden** und **recyclten Materialien**.

The WE CARE collection combines sustainability with a modern casual look and exclusively consists of renewable and recycled materials.



[WWW.ETERNA-NATURALLY.COM](http://WWW.ETERNA-NATURALLY.COM)

Einfach, transparent, nachweisbar.

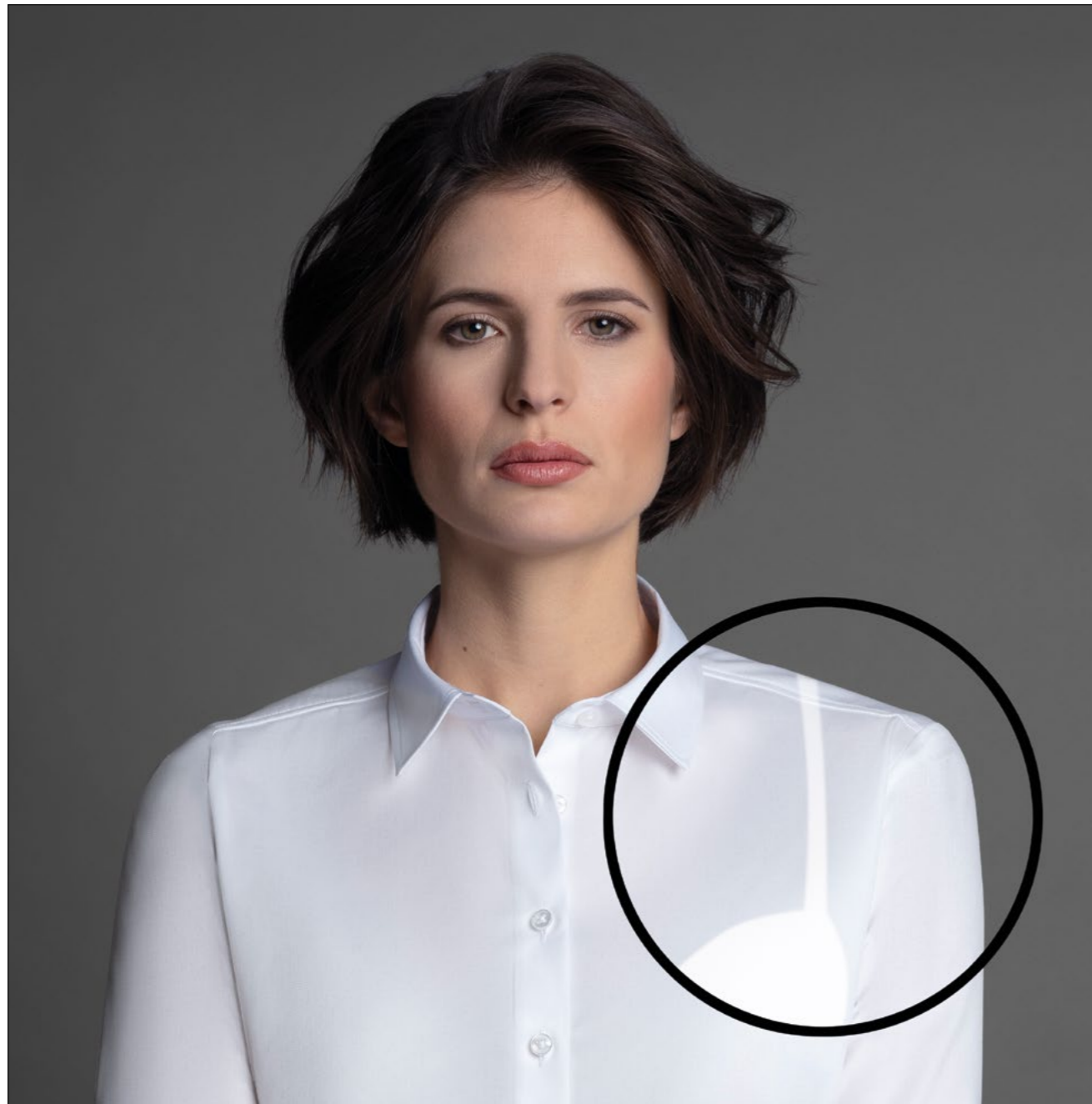
Simple, transparent, verifiable.

**ETERNA**









ETERNA

COVER SHIRT

BLICKDICHT - OPAQUE



## COVER SHIRT

BLICKDICHT - OPAQUE

Blickdicht. Verdeckt alles, was Frau nicht zeigen will.  
**Für einen sicheren Auftritt.**

Opaque. Covers everything a woman does not want to show.  
**For a confident appearance.**

5008

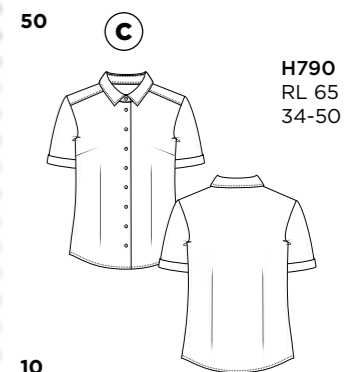


D708  
 RL 66  
 34-50



D10Y  
 RL 66  
 34-44

5008/00/10



H790  
 RL 65  
 34-50



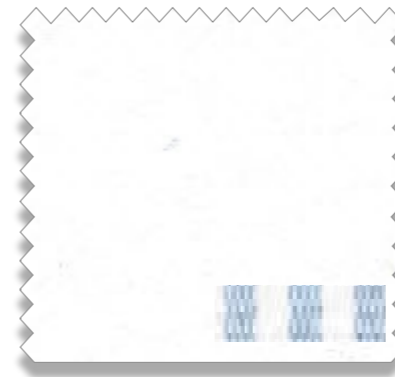




WE CARE

#NATURALLY

5531



70% CO  
30% CLY

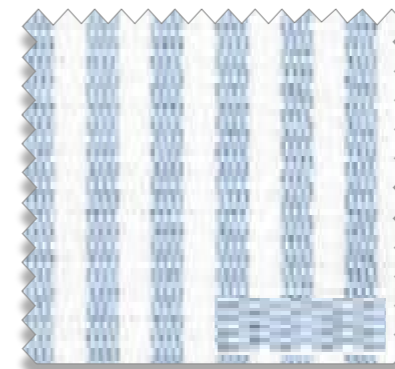


D

D935  
RL 72  
36-50

02

6010



70% CO  
30% CLY



D

D935  
RL 72  
36-50

12

## UPCYCLING SHIRT

REDUCE, REUSE & RECYCLE

Nachhaltig und biologisch abbaubar:  
Das UPCYCLING SHIRT aus den  
neuartigen TENCEL™ x REFIBRA™  
Lyocellfasern.

Sustainable and biodegradable:  
The UPCYCLING SHIRT made from innovative  
TENCEL™ x REFIBRA™ Lyocell fibers.



Holz aus nachhaltiger  
Forstwirtschaft

Wood from sustainable  
forestry



Baumwollreste  
pre-consumer cotton waste



Lyocellfasern der Marke  
TENCEL™ x REFIBRA™

TENCEL™ x REFIBRA™  
branded lyocell fibers



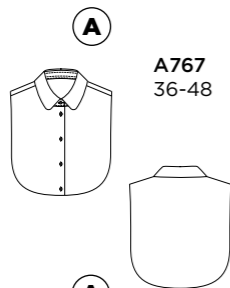
5585



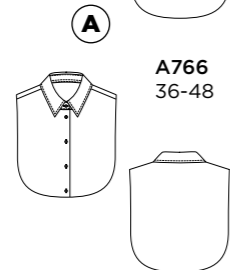
DY54  
RL 68  
34-44

00

EASY IRON STRETCH 95% CO 5% EA



A767  
36-48



A766  
36-48

5585



D721  
RL 72  
36-50

00

EASY IRON STRETCH 95% CO 5% EA



A775  
RL 65  
34-50



A832  
RL 64  
34-50



H879  
RL 72  
34-50

5352



D708  
RL 66  
34-50

00

EASY IRON STRETCH 95% CO 5% EA



85

12

19

39

EASY IRON STRETCH 95% CO 5% EA

5352



D619  
RL 67  
34-50

00

EASY IRON STRETCH 95% CO 5% EA

19

5352



DY07  
RL 66  
34-44

00

EASY IRON STRETCH 95% CO 5% EA



12

19

39

EASY IRON STRETCH 95% CO 5% EA

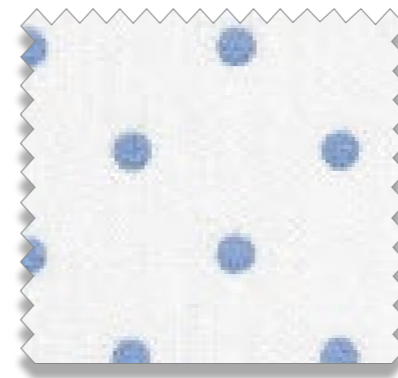




5213/00 D657

ET ERNA

7250



D775  
RL 65  
34-50

F

EASY IRON 100% COTTON

12

5139



D775  
RL 65  
36-48

F

EASY IRON 100% COTTON

12

5145



D904  
RL 78  
34-50

C

NON IRON 100% COTTON

00

5080



D751  
RL 60  
34-50

E

EASY IRON 100% COTTON

00

5213



D657  
RL 65  
34-48

F

NON IRON STRETCH 95% CO 5% EA

00

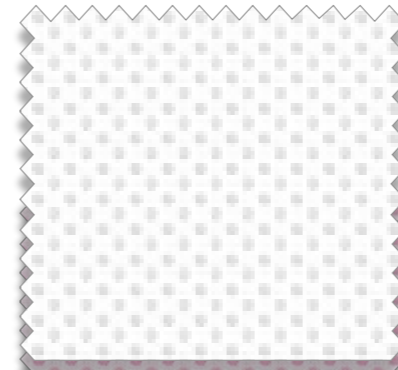
39



7001/12 D775

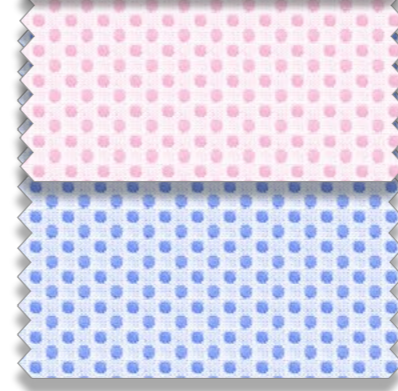
ETERNA

7001

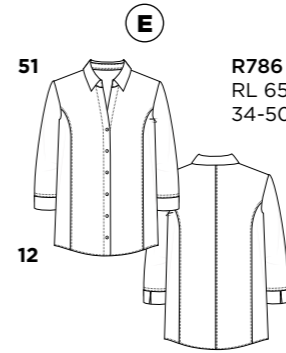


D775  
RL 65  
34-50

00



7001/00\*



R786  
RL 65  
34-50

51



\*Liefertermin April 2021

5174

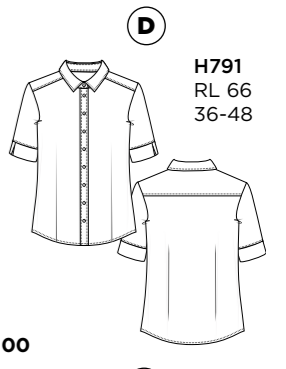
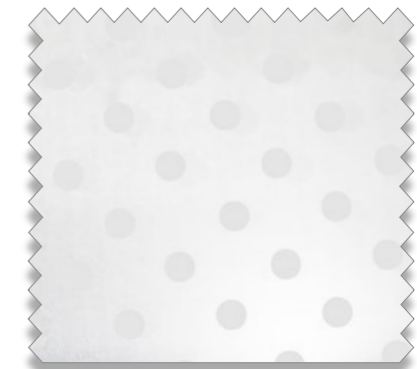


D775  
RL 65  
34-50

00

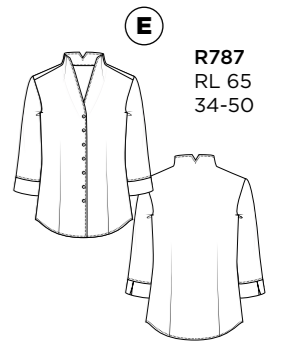


5023



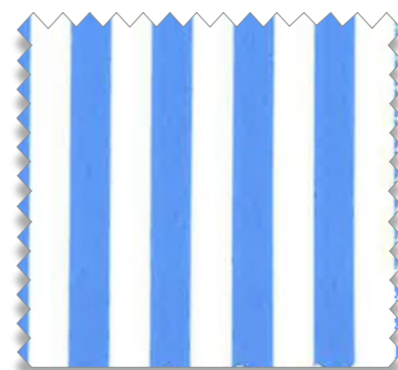
H791  
RL 66  
36-48

00



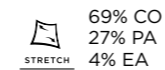
R787  
RL 65  
34-50

6299



D708  
RL 66  
36-48

12



5125



D708  
RL 66  
34-50

00







7293/19 D721

ET ERNA

SEASONALS

LT 01.01. - 15.01.2021

7293 \*



100% CV



D721  
RL 72  
36-48

19

7289 \*



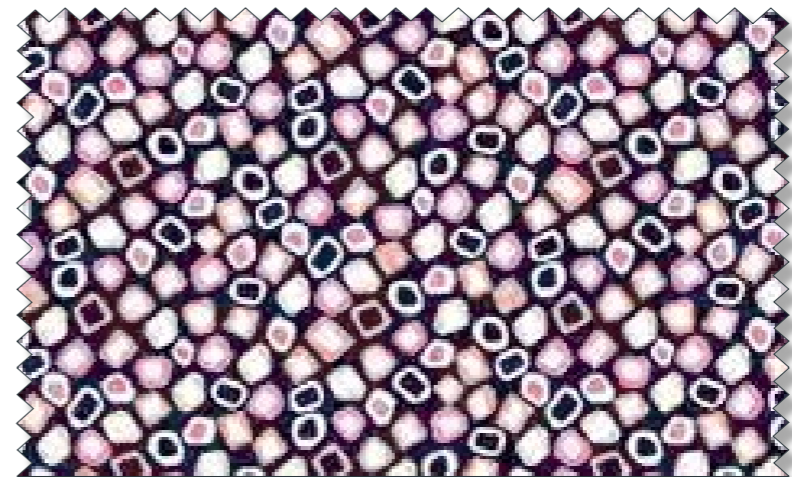
100%  
COTTON



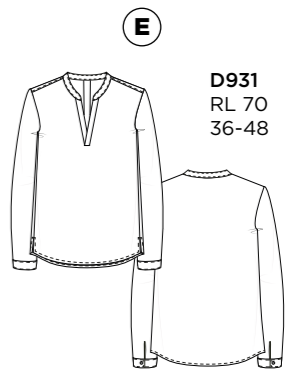
D721  
RL 72  
36-48

19

7436 \*



100% CV



D931  
RL 70  
36-48

18

\* SEASONAL solange Vorrat reicht / as long as stocks last





6169/19 D874

ET ERNA

SEASONALS

LT 01.01. - 15.01.2021

6169 \*



D874  
RL 72  
34-50

19



7204 \*



D775  
RL 65  
34-50

19



7325 \*



D790  
RL 65  
34-50

01



\* SEASONAL solange Vorrat reicht / as long as stocks last





6285/53 D904

ET ERNA

SEASONALS

LT 01.01. - 15.01.2021

6285 \*



D904  
RL 78  
34-48

19



6285 \*



D904  
RL 78  
36-48

26



6285 \*



D904  
RL 78  
36-48

53



\* SEASONAL solange Vorrat reicht / as long as stocks last





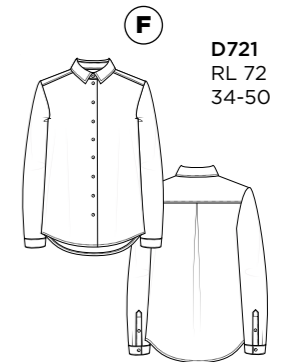
6271/52 D721

ET ERNA

SEASONALS

LT 01.01. - 15.01.2021

6271 \*

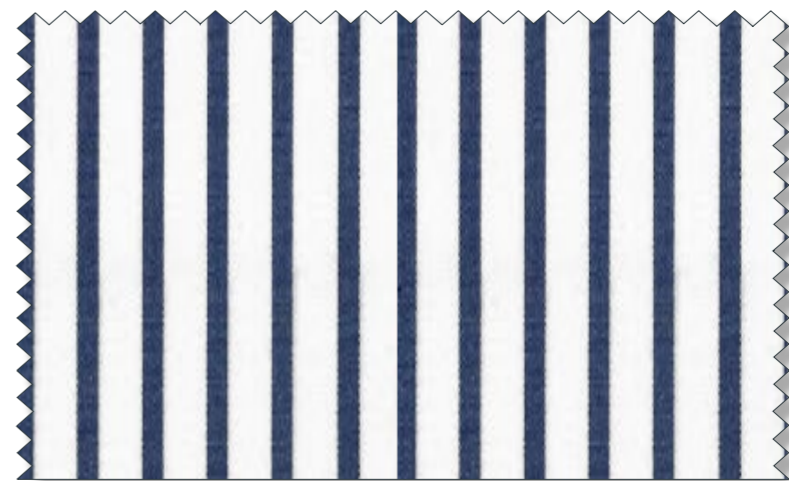


D721  
RL 72  
34-50

52

100% COTTON EASY IRON EXCLUSIVE

6146 \*



H879  
RL 72  
34-48

19

100% COTTON EASY IRON

6123 \*



D935  
RL 72  
34-48

20

100% COTTON

\* SEASONAL solange Vorrat reicht / as long as stocks last





77531/13 H883

ETERNA

SEASONALS

LT 01.02. - 15.02.2021

7226 \*



100% COTTON

7531 \*



100% COTTON

7357 \*



100% COTTON EASY IRON

\* SEASONAL solange Vorrat reicht / as long as stocks last



SEASONALS

LT 01.01. - 15.01.2021

7937 \*



R777  
RL 60  
34-54

19

7195 \*



R828  
RL 70  
34-50

15

6156 \*



H882  
RL 69  
34-50

11

SEASONALS

LT 01.01. - 15.01.2021

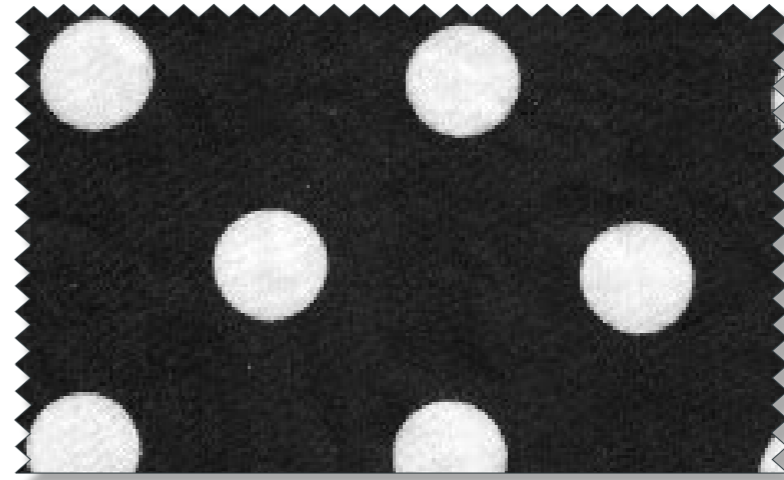
7353 \*



D775  
RL 65  
36-48

19

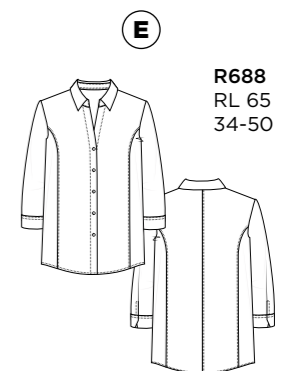
7384 \*



D775  
RL 65  
36-48

39

7208 \*



R688  
RL 65  
34-50

39





7273/55 D626

ET ERNA

SEASONALS

LT 01.01. - 15.01.2021

7273 \*



D626  
RL 72  
34-54

55



7291 \*



D889  
RL 72  
34-50

50



7356 \*



D760  
RL 70  
34-50

80



\* SEASONAL solange Vorrat reicht / as long as stocks last





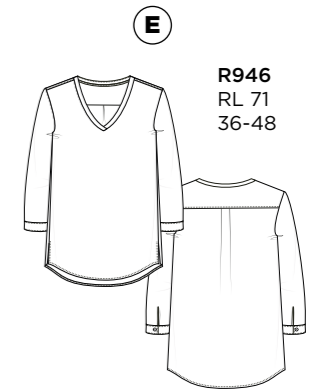
7078/70 R946

ET ERNA

SEASONALS

LT 01.02. - 15.02.2021

7078 \*

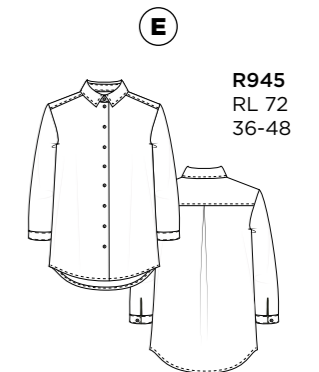


R946  
RL 71  
36-48

70



7089 \*

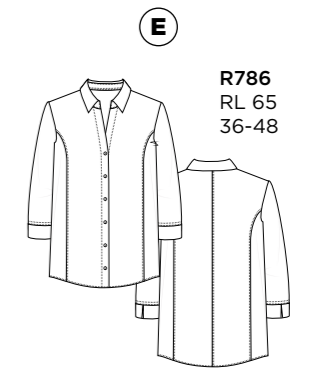
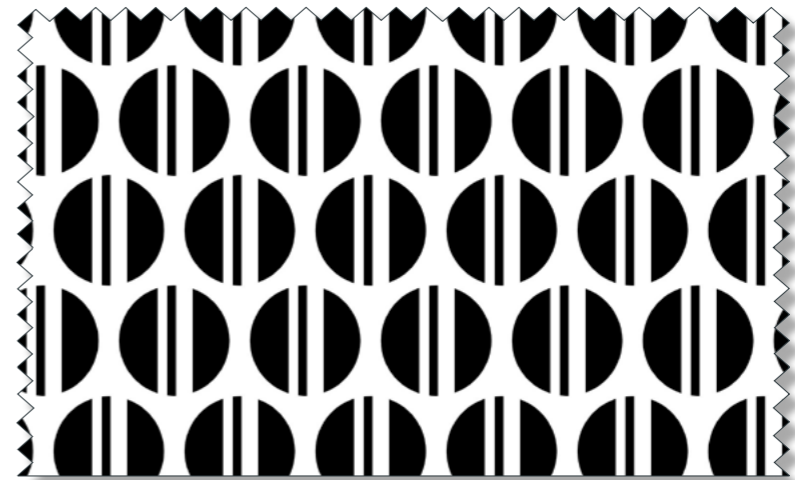


R945  
RL 72  
36-48

10



7099 \*



R786  
RL 65  
36-48

39



\* SEASONAL solange Vorrat reicht / as long as stocks last





7078/13 R771

ET ERNA

SEASONALS

LT 01.02. - 15.02.2021

7087 \*



R771  
RL 69  
36-50

13



7087 \*



R771  
RL 69  
36-48

53



7093 \*



R906  
RL 69  
36-50

13

100% CV

\* SEASONAL solange Vorrat reicht / as long as stocks last





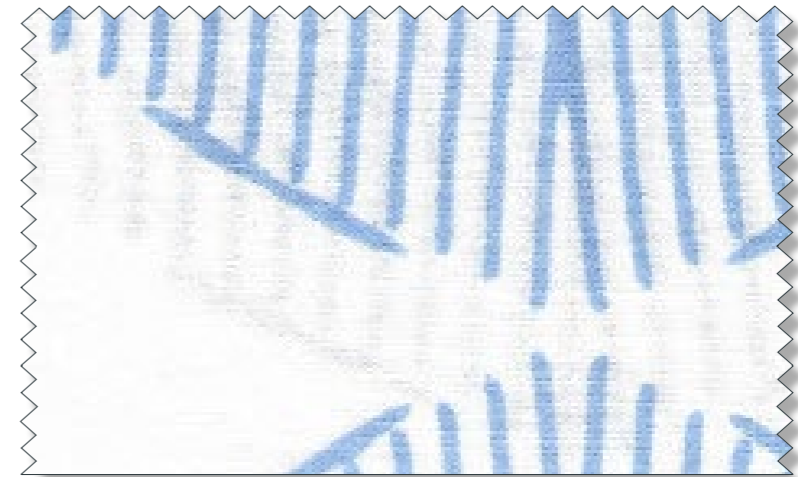
7035/11 R679

**ET ERNA**

SEASONALS

LT 15.02. - 28.02.2021

**7035 \***



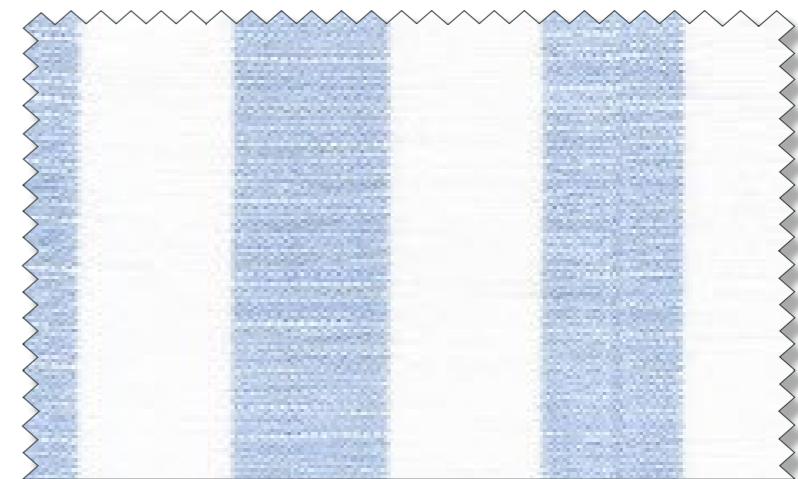
59% CO  
41% LI



**R679**  
RL 72  
34-48

11

**6011 \***



59% CO  
41% LI



**R937**  
RL 85  
34-48

11

**7073 \***



100% CV



**H736**  
RL 70  
36-48

10

\* **SEASONAL** solange Vorrat reicht / as long as stocks last





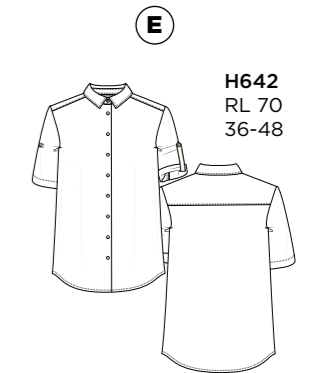
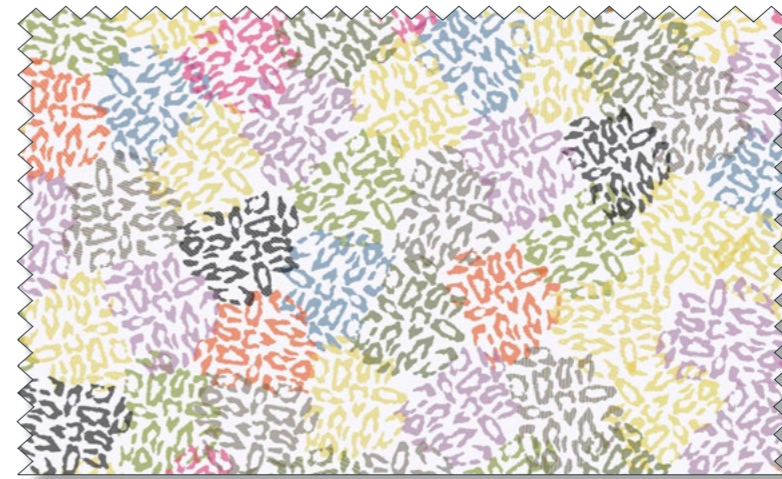
7076/99 H642

ET ERNA

SEASONALS

LT 15.02. - 28.02.2021

7076 \*

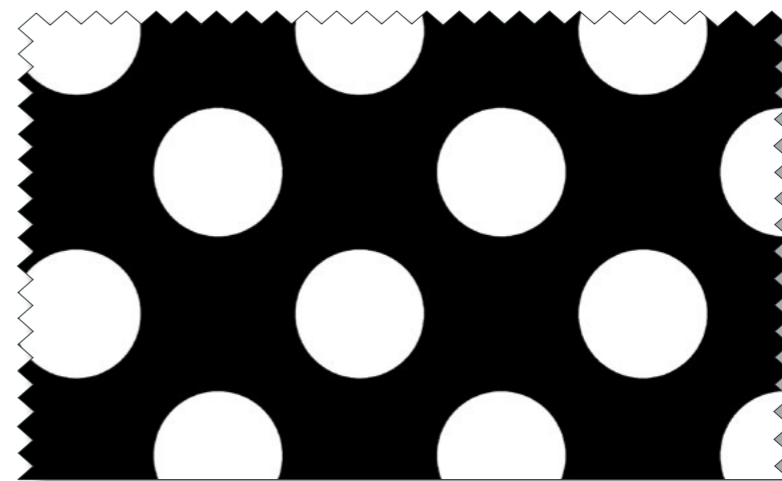


H642  
RL 70  
36-48

99



7189 \*

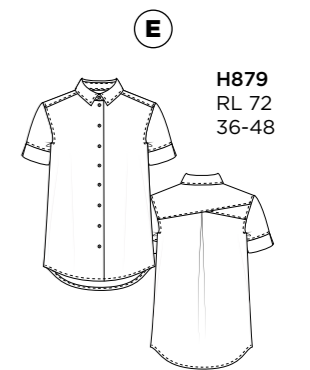


A737  
RL 66  
36-48

39

100% CV

6299 \*



H879  
RL 72  
36-48

12

69% CO  
27% PA  
4% EA  
STRETCH

\* SEASONAL solange Vorrat reicht / as long as stocks last







Unsere Premium-Blusen  
sind CO<sub>2</sub>-neutral.



Our PREMIUM blouses are CO<sub>2</sub> neutral.

5212/00 DS77

5212



DS77  
RL 69  
34-48

00

  79% CO  
18% PA  
3% EA

6112 \*



DS40  
RL 78  
34-48

19

  100% COTTON  
EASY IRON



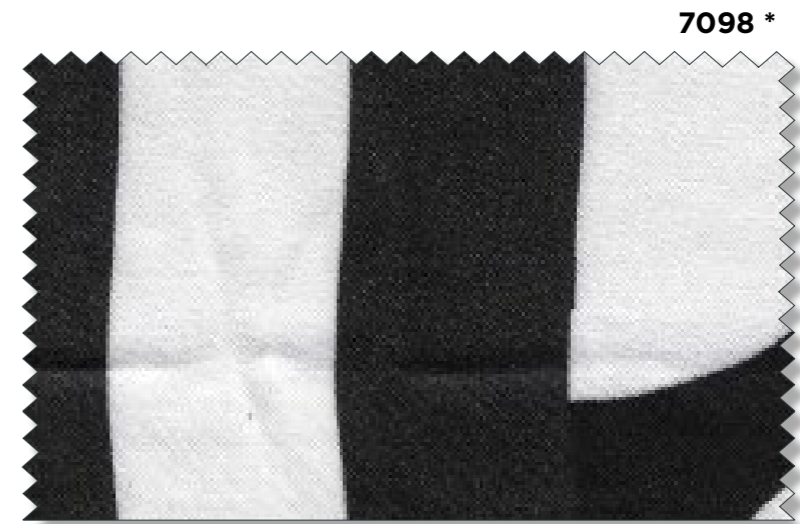
\* **SEASONAL** solange Vorrat reicht / as long as stocks last





7098/39 DS09

ET ERNA



7098 \*



DS09  
RL 70  
36-48

39

100% CV



7052 \*



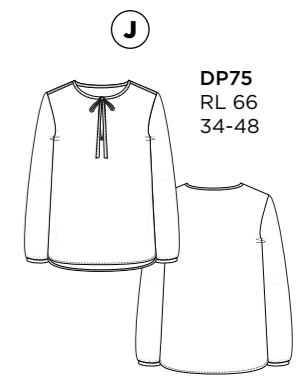
DS58  
RL 66  
34-48

15

100% CV



7281 \*



DP75  
RL 66  
34-48

18

70% CV  
30% SILK





1863  
by  
ETERNA

CASUAL LUXURY

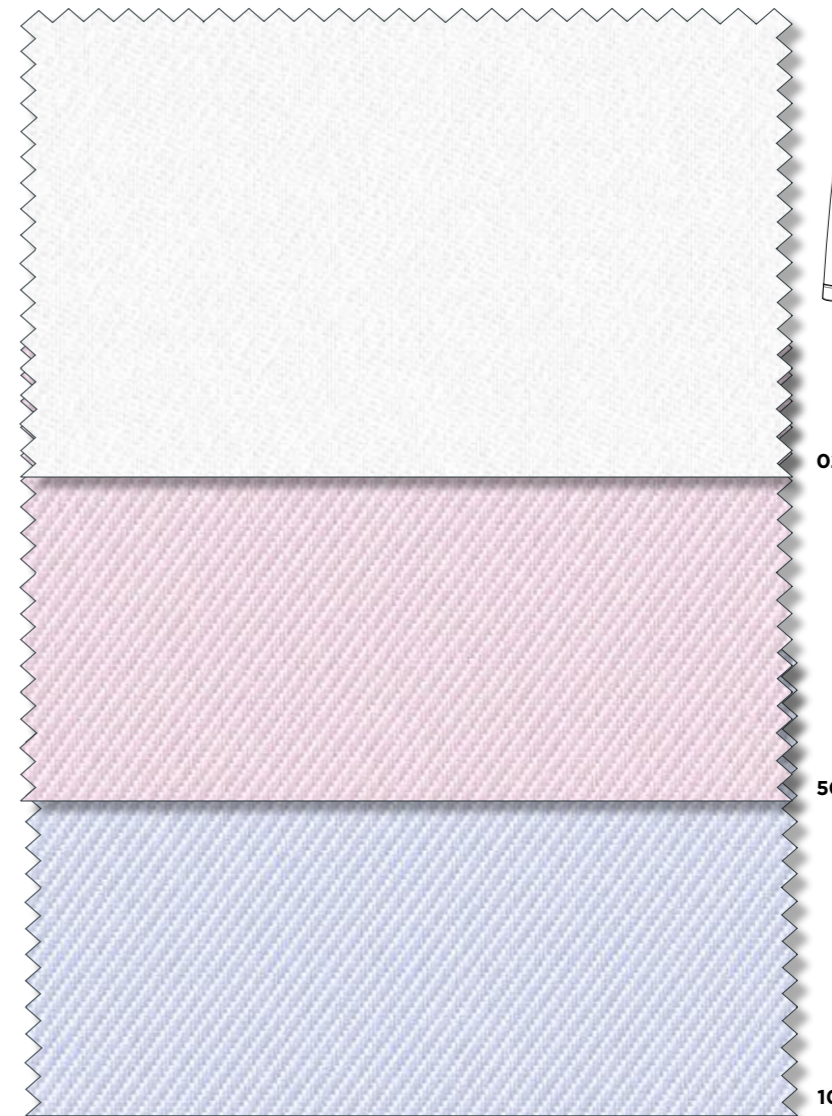
Sportive, gewaschene Blusen in Twill verbinden lässiges Casual-Feeling mit entspanntem Premium-Look. Durch den weichen Griff und die unkonstruierten Kragen und Manschetten wirkt die Hemdbluse relaxed und erhält durch den leichten Glanz und die softe Stoffqualität einen Touch Luxus.

Sporty, washed blouses in twill combine a casual feeling with a relaxed premium look. The soft touch and the unconstructed collars and cuffs give the shirt blouse a relaxed look and a touch of luxury due to the light sheen and the soft fabric quality.

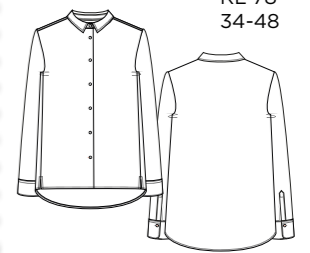


CASUAL LUXURY

5850



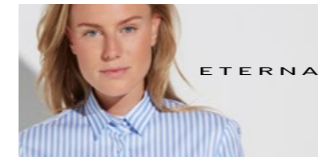
F



DS90  
RL 78  
34-48



ET ERNA



**MODERN CLASSIC**

	SEITE/PAGE:
5008/00 D10Y	9
5008/00 D708	9
5008/00 H790	9
5008/10 D10Y	9
5008/10 D708	9
5008/10 H790	9
5008/50 D10Y	9
5008/50 D708	9
5023/00 H791	17
5023/00 R787	17
5080/00 D751	15
5125/00 D708	17
5139/12 D775	15
5145/00 D904	15
5174/00 D775	17
5213/00 D657	15
5213/39 D657	15
5352/00 D619	13
5352/00 D708	13
5352/00 DY07	13
5352/12 D708	13
5352/12 DY07	13
5352/19 D708	13
5352/19 D619	13
5352/19 DY07	13
5352/39 D708	13
5352/39 DY07	13
5352/85 D708	13
5531/02 D935	11
5585/00 A766	12
5585/00 A767	12
5585/00 A775	12
5585/00 A832	12
5585/00 D721	12
5585/00 DY54	12
5585/00 H879	12
6010/12 D935	11
6299/12 D708	17
7001/00 D775	17
7001/00 R786	17
7001/51 D775	17
7001/12 D775	17
7250/12 D775	15
6011/11 R937 *	37
6123/20 D935 *	25
6146/19 H879 *	25
6156/11 H882 *	28
6169/19 D874 *	21
6271/52 D721 *	25
6285/19 D904 *	23
6285/26 D904 *	23

	SEITE/PAGE:
6285/53 D904 *	23
6299/12 H879 *	39
7035/11 R679 *	37
7073/10 H736 *	37
7076/99 H642 *	39
7078/70 R946 *	33
7087/13 R771 *	35
7087/53 R771 *	35
7089/10 R945 *	33
7093/13 R906 *	35
7099/39 R786 *	33
7189/39 A737 *	39
7195/15 R828 *	28
7204/19 D775 *	21
7208/39 R688 *	29
7226/70 R614 *	27
7273/55 D626 *	31
7289/19 D721 *	19
7291/50 D889 *	31
7293/19 D721 *	19
7325/01 D790 *	21
7353/19 D775 *	29
7356/80 D760 *	31
7357/70 H882 *	27
7384/39 D775 *	29
7436/18 D931 *	19
7531/13 H883 *	27
7937/19 R777 *	28



**PREMIUM**

	SEITE/PAGE:
5212/00 DS77	43
5850/02 DS90	47
5850/10 DS90	47
5850/50 DS90	47
6112/19 DS40 *	43
7098/39 DS09 *	45
7052/15 DS58 *	45
7281/18 DP75 *	45



## Außendienst National/domestic agents

### NATIONAL SALES DEPARTMENT:

Tel.: +49 851 98 16 - 200  
Fax: +49 851 98 16 - 470  
E-Mail: [nationalsales@eterna.de](mailto:nationalsales@eterna.de)

### IHR BETREUENDER AUSSENDIENST:

your agent

Sachsen-Anhalt, Sachsen, Thüringen,  
Berlin, Brandenburg

#### Tino Eckelt

Mitteldeutsches Mode Center  
Haus C, 2. OG, Raum Nr. 254  
Münchener Ring 2  
04435 Schkeuditz  
Mobil: +49 170 2301974  
E-Mail: [tino.eckelt@eterna.de](mailto:tino.eckelt@eterna.de)

Hamburg, Schleswig-Holstein,  
Bremen, Niedersachsen

#### Martina Schultze

Fax: +49 40 65055001  
Mobil: +49 172 8878411  
Modezentrum Hamburg  
Modering 11, Haus M11  
1 Etage Raum 117  
22457 Hamburg  
Tel.: +49 40 18072787  
Fax: +49 40 58969401  
E-Mail: [martina.schultze@eterna.de](mailto:martina.schultze@eterna.de)

Rheinland-Pfalz, Saarland, Hessen

#### Andrea Bernhardt-Wolf

Tr3ndagentur  
Orderbüro Eschborn  
Haus 3 / Etage 7 / Raum 753  
Kölnerstr. 1  
65760 Eschborn  
Tel.: +49 6196 7753153  
Fax: +49 6196 7753154  
Mobil: +49178 77 77 212  
[a.bernhardt-wolf@tr3ndagentur.de](mailto:a.bernhardt-wolf@tr3ndagentur.de)

Nordrhein-Westfalen/Nord, Münster,  
Detmold, Teilgebiet Weser-Ems,  
Sauerland

#### Agentur Fabisch

**Elke Fabisch**  
Tel.: +49 5207 8623  
Fax: +49 5207 8645  
Mobil: +49 171 6234454  
E-Mail: [elke.fabisch@eterna.de](mailto:elke.fabisch@eterna.de)

Wir sind telefonisch zu  
folgenden Zeiten erreichbar:  
Mo-Do 8.00 - 17.00 Uhr  
Freitag 8.00 - 16.00 Uhr

We are at your disposal from  
Monday to Thursday from  
08.00 to 17.00 and on  
Friday from 08.00 to 16.00.

Mecklenburg-Vorpommern

#### André Simonsen

Showroom:  
Modezentrum Hamburg  
Haus M11, Etage 1, Raum 117  
Modering 11  
22457 Hamburg  
Tel.: +49 40 18072787  
Fax: +49 40 58969401  
Mobil: +49 151 40558407  
E-Mail: [andre.simonsen@eterna.de](mailto:andre.simonsen@eterna.de)

Baden-Württemberg, Bayern, Schwaben

#### Mario Spohn

Showroom Haus der Mode  
6. OG, Raum 603  
Mahdentalstr. 96-98  
71065 Sindelfingen

MTC München  
Haus 4 / Raum 402  
Taunusstr. 45  
80807 München  
Mobil: +49 160 1765103  
Fax: +49 7031 4137223  
E-Mail: [mario.spohn@eterna.de](mailto:mario.spohn@eterna.de)

Nordrhein-Westfalen/Süd  
Düsseldorf, Köln

#### Claudia Christ

ETERNA Showroom  
Halle 30, Raum-Nr. 3.01/3.0G Raum 1  
Rheinmetall-Gelände  
Derendorfer Allee 12  
40476 Düsseldorf  
Fax: +49 211 51424811  
Mobil: +49 170 2248017  
E-Mail: [claudia.christ@eterna.de](mailto:claudia.christ@eterna.de)

## Außendienst International/international agents

### INTERNATIONAL SALES DEPARTMENT:

Tel.: +49 851 98 16 - 599  
Fax: +49 851 98 16 - 467  
E-Mail: [export@eterna.de](mailto:export@eterna.de)

### IHR BETREUENDER AUSSENDIENST:

your agent

Wir sind telefonisch zu  
folgenden Zeiten erreichbar:  
Mo-Do 8.00 - 17.00 Uhr  
Freitag 8.00 - 14.00 Uhr

We are at your disposal from  
Monday to Thursday from  
08.00 to 17.00 and on  
Friday from 08.00 to 14.00.

### A

#### Agentur Stephan Leitner-Hözl

Fashion Mall EG - ETERNA Showroom  
Carl-Zuckmayer-Straße 37  
A-5021 Salzburg - Bergheim  
Tel.: +43 664 9100970 o.  
Tel.: +43 664 2332080  
E-Mail: [office@stephan-lh.at](mailto:office@stephan-lh.at)

### CH

#### Beutler Fashion Group

**Dominik Bünler**  
TMC Galleria  
Thurgauerstraße 119 EG  
CH-8152 Glattbrugg ZH  
Mobil: +41 79 951 34 67  
E-Mail: [eterna@beutler.ch](mailto:eterna@beutler.ch)

### NL

#### Annalies Perdijk/C.van Geuns BV

**Annalies Perdijk**  
World Fashion Center / 01.07.04  
Kon. Wilhelminaplein 13  
NL-1062 HH Amsterdam  
Tel.: +31 20 3468498  
Mobil: +31 6 53 513 226  
E-Mail: [info@cvangeunsbv.nl](mailto:info@cvangeunsbv.nl)

### BE, LU

#### woodville fashion agency bvba

Showroom:  
Trade Mart - Fashion Gardens - Firenze F110  
Atomiumlaan 1 PB 33  
1020 Brussels - Belgium  
**Hannelore Engelbosch**  
Tel.: +32 477 292071  
E-Mail: [info@eternabelux.be](mailto:info@eternabelux.be)  
**Francis Ryckmans**  
Tel.: +32 478 555686  
E-Mail: [info@eternabelux.be](mailto:info@eternabelux.be)

### F

#### A.C.A. Conseil et Diffusion

**Claudine Mercier**  
76-78, avenue du Val de Beauté  
F-94130 Nogent sur Marne  
Mobil: +33 6 62 05 16 22  
E-Mail: [claudine-mercier@acaconseil.com](mailto:claudine-mercier@acaconseil.com)

### UA + MD

#### Natalia & Pavel Cojocar

Tel.: +49 211 7489069  
Fax: +49 211 74905947  
Mobil: +49 160 97311333  
Mobil Ukraine: +380 50 8691632  
Mobil Moldawien: +373 68 704430  
E-Mail: [eterna-cojocar@online.de](mailto:eterna-cojocar@online.de)

### CZ + SK

#### MGTRADE s.r.o.

Renata de la Sierra  
Gorazdova 34  
81104 Bratislava  
Slowakei  
Mobil: +421 905 947 344  
E-Mail: [renka.eterna@gmail.com](mailto:renka.eterna@gmail.com)

### DK

#### Henrik C. Svendsen

**Tekstilagentur I/S**  
Showroom: Bella Center  
Cliff Show-Rooms Stand B2-281-  
Womens Blouses  
Sadolinsvænget 7  
DK-5230 Odense M  
Tel.: +45 6591 0072  
E-Mail: [kontor@hcs-tekstilagentur.dk](mailto:kontor@hcs-tekstilagentur.dk)

### N

#### Gunnar Nilsen A/S

**Mona & Roger Fausko**  
Norwegian Fashion Center  
Rom 3f-01, Snarøyveien 30L  
N-1360 Fornebu  
Tel.: +47 45819550  
E-Mail: [gunnar.nilsen.as@online.no](mailto:gunnar.nilsen.as@online.no)

### FIN

#### PITKIS OY

**Esa Pitkäranta**  
Uitonsalmentie 83A  
40950 Muurame  
FINLAND  
Tel.: +358 400 844836  
E-Mail: [esa@pitkis.fi](mailto:esa@pitkis.fi)

ETERNA Mode GmbH | Medienstraße 12 | 94036 Passau | Germany  
Registergericht | Court of registration: Passau  
Registernummer | Commercial register number: HRB 6989  
Geschäftsführer | CEO: Henning Gerbaulet

<https://unternehmen.eterna.de/>





[WWW.ETERNA.DE](http://WWW.ETERNA.DE)